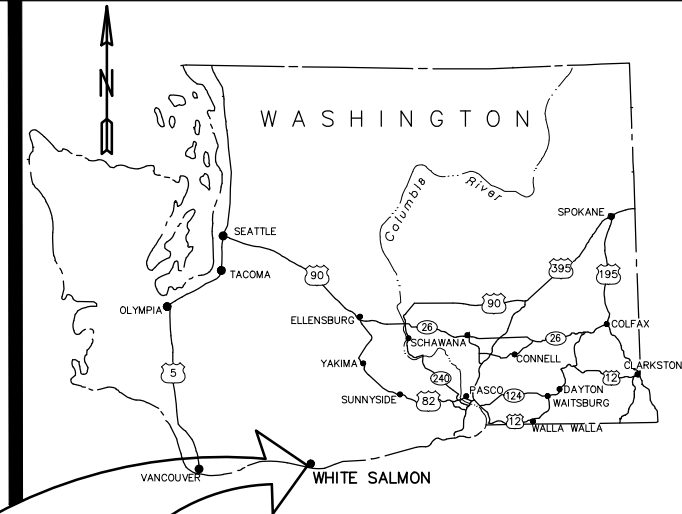


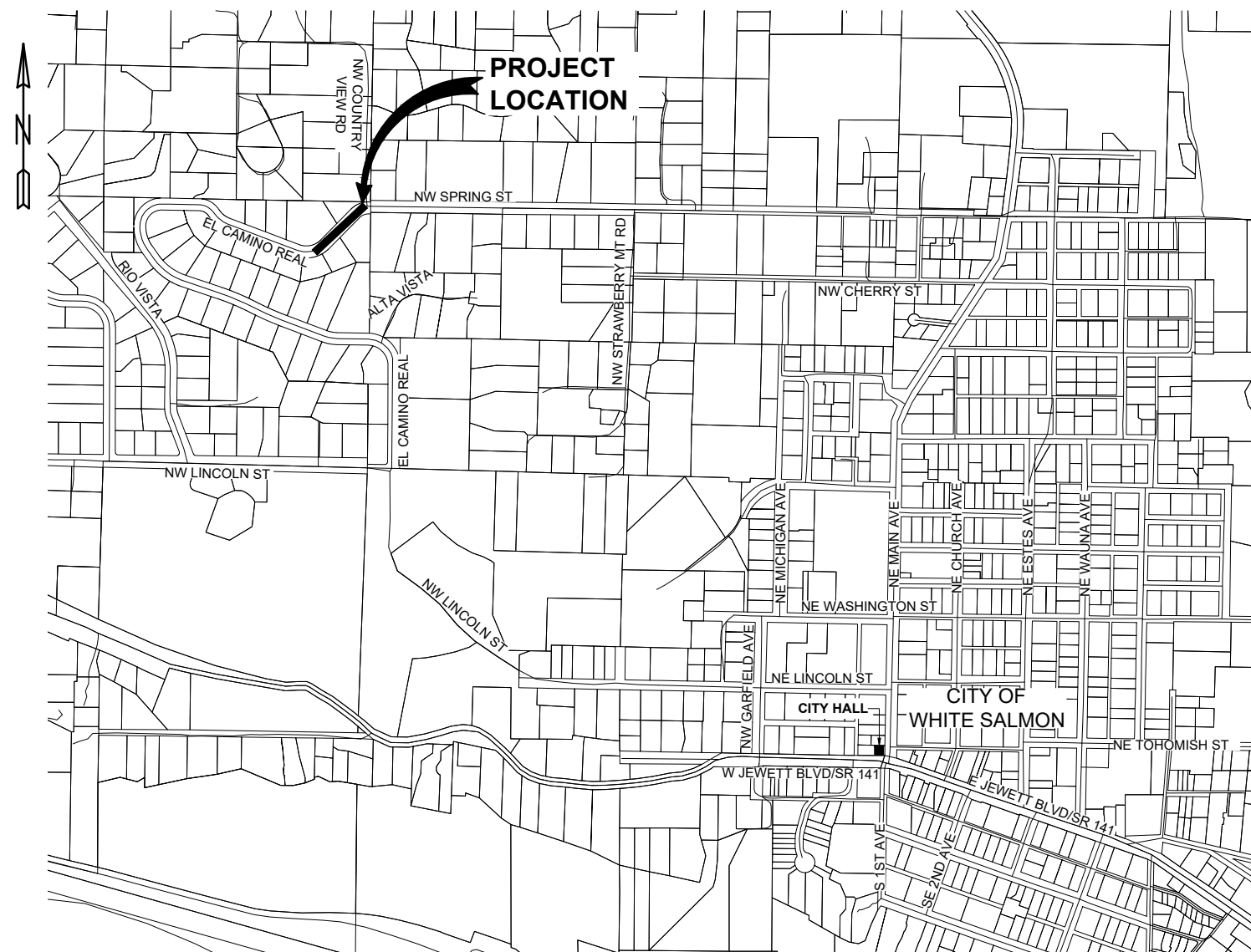
CITY OF WHITE SALMON, WASHINGTON

EL CAMINO REAL WATER LINE IMPROVEMENTS 2021



INDEX

SHEET NO.		PAGE NO.
G-001	COVER	1
G-002	LEGEND	2
G-003	GENERAL NOTES AND ABBREVIATIONS	3
C-101	DEMOLITION AND SITE PLAN	4
C-501	MISCELLANEOUS DETAILS	5
C-502	PHOTOGRAPHS	6



VICINITY MAP
NTS



Know what's below.
Call before you dig.

CITY COUNCIL

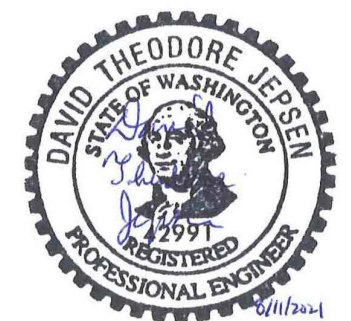
- MARLA KEETHLER - Mayor
- JASON HARTMANN
- ASHLEY POST
- DAVID LINDLEY
- JIM RANSIER
- JOE TURKIEWICZ

CITY OFFICIALS

- PAT MUNYAN - City Administrator/ Public Works Director
- JAN BRENDING - City Clerk/Treasurer
- RUSS AVERY - Operations Manager

PROJECT FUNDING

CITY OF WHITE SALMON



Anderson Perry & Associates, Inc.
engineering • surveying • natural resources

214 E. Birch - Walla Walla, WA 99362 Ph: (509)529-9260 Fax: (509)529-8102
LA GRANDE, OR WALLA WALLA, WA REDMOND, OR HERMISTON, OR

SHEET
G-001

1 OF 6

LEGEND

WATER

	EXISTING	PROPOSED
WATER LINE	— — — W —	— — — 6" W —
WATER LINE	— — — W —	— — — W —
CAP	⌋	⌋
COUPLING	⌌	⌌
REDUCER	▷	▷
THRUST BLOCK	⊞	⊞
WATER METER	⊖	⊖
FIRE HYDRANT	△	△
YARD HYDRANT	◁	◁
FLANGE	⊥	⊥
AIR RELIEF	⊙	⊙
BLOWOFF	⊙	⊙

SEWER/STORM DRAIN

SANITARY SEWER LINE	— — — SS —	— — — 12" SS —
SANITARY SEWER SERVICE	— — — SS —	— — — 12" SS —
STORM DRAIN LINE	— — — SD —	— — — 12" SD —
SANITARY MANHOLE	⊙	⊙
SANITARY CLEANOUT	◇	◇
STORM DRAIN MANHOLE	⊙	⊙
STORM DRAIN CATCH BASIN	□	□

MISC. UTILITIES

BURIED POWER	— — — P —	— — — P —
OVERHEAD POWER	— — — P —	— — — P —
BURIED TELEPHONE	— — — OHT —	— — — OHT —
OVERHEAD TELEPHONE	— — — OHT —	— — — OHT —
BURIED TV	— — — TV —	— — — TV —
OVERHEAD TV	— — — TV —	— — — TV —
GAS	— — — G —	— — — G —
IRRIGATION	— — — IRR —	— — — IRR —
UTILITY POLE	⊖	⊖
UTILITY POLE ANCHOR	←	←
PAD TRANSFORMER	⊠	⊠
POWER VAULT	⊠	⊠
TELEPHONE RISER	⊠	⊠
TELEPHONE VAULT	⊠	⊠
GAS METER	⊠	⊠
GAS VALVE	⊠	⊠
STREET LIGHT	⊙	⊙
YARD LIGHT	⊙	⊙
GUARD POST	⊙	⊙

SURVEY

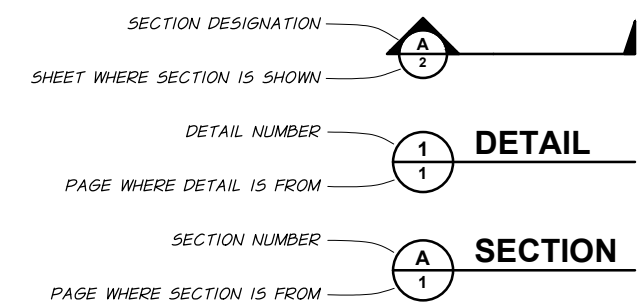
	EXISTING	PROPOSED
ANGLE POINT	△	△
BENCH MARK	⊕	⊕
BLOCK CORNER	⊙	⊙
IRON PIPE	⊙	⊙
MONUMENT (IN CASE)	⊕	⊕
MONUMENT (SURFACE)	⊕	⊕
OWNERSHIP TIE	↙	↙
MEANDER CORNER	⊕ MC	⊕ MC
WITNESS CORNER	⊕ WC	⊕ WC
SOIL BORING/TEST PIT	⊕	⊕
SPOT ELEVATION	⊕	⊕
CENTERLINE	— — —	— — —
RIGHT-OF-WAY	— — —	— — —
PROPERTY LINE	— — —	— — —
EASEMENT LINE	— — —	— — —
SECTION LINE	— — —	— — —

SURFACE FEATURES

INDEX CONTOUR	— 740 —	— 740 —
INTERMEDIATE CONTOUR	— — — —	— — — —
CREEK/DITCH CENTERLINE	— · · · —	— · · · —
RIVERBANK/ShORELINE	— — —	— — —
EDGE ASPHALT/CONCRETE	— — —	— — —
EDGE GRAVEL	— — —	— — —
FENCE LINE/GATE	— x — x —	— x — x —
GUARDRAIL	— ⊠ — ⊠ —	— ⊠ — ⊠ —
DAYLIGHT/CATCH POINT	⊕	⊕
TREE, CONIFER	⊕	⊕
TREE, DECIDUOUS	⊕	⊕
SHRUB/BRUSH	⊕	⊕
SIGN	⊕	⊕
MAILBOX	⊕	⊕
BUILDING	⊕	⊕
EMBANKMENT/SLOPE	⊕	⊕

RESTORATION

	EXISTING	PROPOSED
ASPHALT OVERLAY	⊕	⊕
ASPHALT RESTORATION AND OVERLAY	⊕	⊕
GRAVEL HATCH	⊕	⊕
CONCRETE HATCH	⊕	⊕
GRASS/SOD HATCH	⊕	⊕



REVISION	BY	DATE	JOB NUMBER	DATE
DESIGNED BY	D. JEPSEN		250-18	July 30, 2021
DRAWN BY	J. CHAPMAN		ACAD FILE:	250-18-060-G-002-LEG.DWG
REVIEWED BY	—		COPYRIGHT 2021 BY ANDERSON PERRY & ASSOC., INC.	



CITY OF WHITE SALMON EL CAMINO REAL WATER LINE IMPROVEMENTS 2021	SHEET G-002 2 OF 6
LEGEND	

R:\Clients\White Salmon\250-18 El Camino Water\060 Design\250-18-060-G-002-LEG.dwg, G-002, 8/11/2021 1:36:54 PM

GENERAL NOTES

1. THESE DRAWINGS SHALL BE COORDINATED AND USED IN CONJUNCTION WITH THE CITY OF WHITE SALMON DEVELOPER STANDARDS FOR THE CONSTRUCTION AND ACCEPTANCE OF WATER AND SEWAGE FACILITIES (DEVELOPER STANDARDS), SEPTEMBER 5, 2018, AND AS AMENDED, AND APPROVED SUBMITTALS.
2. THE CONTRACTOR SHALL BE RESPONSIBLE FOR LOCATING AND PROTECTING ALL EXISTING UTILITIES, BOTH PUBLIC AND PRIVATE, IN AND AROUND THE WORK AREA. THE CONTRACTOR SHALL MAKE ANY ADVANCE EXPLORATION NECESSARY TO PROPERLY PLAN THE INSTALLATION OF PIPE TO THE LINE AND GRADE SHOWN ON THE DRAWINGS. THIS INCLUDES POTHOLING, WHICH SHALL SUFFICIENTLY PRECEDE LAYING OF PIPE TO ALLOW FOR ANY REQUIRED VERTICAL OR HORIZONTAL GRADE ADJUSTMENTS OF PIPE ALIGNMENT TO BE MADE WITHOUT REWORK. ELEVATION ADJUSTMENTS AT UTILITY LINE CROSSING SHALL BE EXPECTED AND CONSIDERED INCIDENTAL TO THE WORK. ANY DISCREPANCIES BETWEEN THE DRAWINGS AND EXISTING CONDITIONS SHALL BE IMMEDIATELY BROUGHT TO THE ATTENTION OF THE OWNER AND DOCUMENTED ON THE RECORD DRAWINGS. A SURVEY OF THE PROJECT SITE HAS NOT BEEN COMPLETED.
3. ALL AREAS DISTURBED BY CONSTRUCTION ACTIVITIES SHALL BE RESTORED TO PRE-EXISTING OR BETTER CONDITIONS.
4. THE WATER LINE ALIGNMENT AND DETAILS ON THESE SHEETS ARE SCHEMATIC IN NATURE. THE CONTRACTOR SHALL INSTALL THE WATER LINES AS MAY BE REQUIRED IN THE FIELD TO SATISFY THE INTENDED DESIGN AND AS APPROVED BY THE OWNER. THE CONTRACTOR MAY PROPOSE ALTERNATE ALIGNMENTS AND COMBINATION OF FITTINGS.
5. HORIZONTAL AND VERTICAL BENDS ARE SHOWN WHERE NECESSARY. ADDITIONAL BENDS MAY BE NECESSARY DEPENDING ON EXACT LOCATION OF EXISTING UTILITIES, ETC. THE CONTRACTOR SHALL NOT EXCEED MANUFACTURER'S RECOMMENDATION FOR JOINT DEFLECTION.
6. CONNECTIONS TO EXISTING WATER LINES MAY REQUIRE TEMPORARY SHUTDOWNS OF EXISTING FACILITIES. THE CONTRACTOR SHALL COORDINATE THIS WORK WITH THE OWNER, THE AFFECTED PROPERTY OWNERS AND UTILITIES AND REQUEST SHUTDOWNS A MINIMUM OF 72 HOURS IN ADVANCE OF DESIRED TIMING OF THE CONNECTION WORK. THE CONTRACTOR SHALL NOT ASSUME SHUTDOWN TIMES, BUT RATHER SCHEDULE AND COORDINATE SHUTDOWNS.
7. OPERATION OF EXISTING VALVES AND FACILITIES SHALL BE PERFORMED BY OWNER PERSONNEL UNLESS PERMISSION IS OBTAINED FROM THE OWNER FOR OPERATION OF THE EXISTING SYSTEM BY THE CONTRACTOR.
8. THE CONTRACTOR SHALL PROVIDE TEMPORARY TAPS, BLOWOFFS, FITTINGS AND THRUST BLOCKS AS REQUIRED TO FACILITATE FLUSHING, TESTING AND DISINFECTION OF NEW WATER LINES. AT COMPLETION OF DISINFECTION AND TESTING, ALL TEMPORARY TEST TAPS SHALL BE REPLACED WITH PERMANENT PLUGS.
9. AT THE END OF EACH WORKDAY, ALL OPEN TRENCHES SHALL BE BACKFILLED OR TEMPORARILY COVERED TO THE SATISFACTION OF THE ENGINEER.
10. CONTRACTOR SHALL POTHOLE SUFFICIENTLY AHEAD TO DETERMINE THE DEPTH OF EACH EXISTING UTILITY WHERE IT CROSSES THE NEW MAIN TO MAINTAIN SLOPE DIRECTION, AVOID ANY HIGH POINTS, AND AVOID ANY CONFLICTS WITH THE EXISTING UTILITIES. IF THE NEW MAIN CAN NOT BE INSTALLED OVER THE EXISTING UTILITY WHILE PROVIDING MINIMUM COVER THEN THE NEW MAIN SHALL BE INSTALLED BELOW THE EXISTING UTILITY. NO ADDITIONAL PAYMENT WILL BE MADE FOR DEEPER INSTALLATIONS NECESSARY TO MAINTAIN SLOPE DIRECTION OR TO AVOID UTILITY CROSSINGS.
11. ANY OBSTRUCTION ENCOUNTERED THAT MAY NOT BE SHOWN ON THE PLANS SHALL BE IMMEDIATELY BROUGHT TO THE ATTENTION OF THE OWNER. ITEMS VISIBLE IN THE FIELD ARE THE CONTRACTOR'S RESPONSIBILITY, EVEN IF NOT SHOWN ON THE PLANS.
12. ALL VALVES, TEES, BENDS, AND FITTINGS SHALL HAVE THRUST BLOCKS, ANCHORS, OR TIES WITH SUFFICIENT BEARING AREA, EMBEDMENT, AND SIZE AS REQUIRED IN CITY OF WHITE SALMON STANDARD DETAILS W-D3, W-D13, W-D14, AND W-D15.

PIPE SCHEDULE

WHERE NOT SPECIFICALLY NOTED ON THE DRAWINGS, OR OTHERWISE SPECIFIED, PIPE SHALL BE INSTALLED IN ACCORDANCE WITH THE FOLLOWING SCHEDULE AND OWNER'S DEVELOPER STANDARDS.

SIZE	PIPING	JOINTS AND FITTINGS
6" WATER MAIN	PVC, AWWA C900, PRESSURE CLASS 235 PSI, DR 18	PUSH-ON, DIP, CEMENT-LINED, FLG/MJ. AWWA C110, C111, AND C153
1" SERVICE LINES	PEX, CTS, AWWA C904, ASTM F876/F877	COMPRESSION COUPLINGS AWWA C800

ABBREVIATIONS

AC	ASBESTOS-CEMENT
AWWA	AMERICAN WATER WORKS ASSOCIATION
BOC	BACK OF CURB
CB	CATCH BASIN
CDF	CONTROL DENSITY FILL
CL	CENTERLINE
CSBC	CRUSHED SURFACING BASE COURSE
CSTC	CRUSHED SURFACING TOP COURSE
CTS	COPPER TUBE SIZE
DI	DUCTILE IRON
ELEV	ELEVATION
EOP	END OF PAVING
ESCP	EROSION AND SEDIMENT CONTROL PLAN
EST	ESTIMATED
EVCE	END VERTICAL CURVE ELEVATION
EXTG	EXISTING
FDC	FIRE DEPARTMENT CONNECTION
FG	FINISH GRADE
FL	FLOW LINE
FLG	FLANGE
FOC	FACE OF CURB
GB	GRADE BREAK
HDPE	HIGH DENSITY POLYETHYLENE
HMA	HOT MIX ASPHALT
IE	INVERT ELEVATION
LP	LOW POINT
LT	LEFT
MAX	MAXIMUM
ME	MATCH EXISTING
MIN	MINIMUM
MJ	MECHANICAL JOINT
MSC	MISCELLANEOUS
MSL	MEAN SEA LEVEL
NE	NORTHEAST
NW	NORTHWEST
PC	POINT OF CURVE
PEX	CROSS-LINKED POLYETHYLENE
PIV	POST INDICATOR VALVE
PL	PROPERTY LINE
PROJ	PROJECTED
PSI	POUNDS PER SQUARE INCH
PT	POINT OF TANGENT
PUE	PUBLIC UTILITY EASEMENT
PVC	POLYVINYL CHLORIDE
PVI	POINT OF VERTICAL INTERSECTION
REQ'D	REQUIRED
ROW	RIGHT-OF-WAY
RT	RIGHT
SD	STORM DRAIN
SDMH	STORM DRAIN MANHOLE
SE	SOUTHEAST
SR	STATE ROUTE
SS	SANITARY SEWER
SSMH	SANITARY SEWER MANHOLE
STA	STATION
STD	STANDARD
STL	STEEL
SW	SOUTHWEST
TBC	TOP BACK OF CURB
TBDC	TOP BACK OF DEPRESSED CURB
TC	TOP OF CURB
TP	TOP OF PAVEMENT
TYP	TYPICAL
VC	VERTICAL CURVE
WM	WATER MAIN
WSDOT	WASHINGTON STATE DEPARTMENT OF TRANSPORTATION



REVISION	BY	DATE	JOB NUMBER 250-18	DATE July 29, 2021
DESIGNED BY D. JEPSEN			ACAD FILE: 250-18-060-G-003-GEN.DWG	
DRAWN BY J. CHAPMAN			COPYRIGHT 2021 BY ANDERSON PERRY & ASSOC., INC.	
REVIEWED BY —				



CITY OF WHITE SALMON
EL CAMINO REAL WATER LINE IMPROVEMENTS
2021
GENERAL NOTES AND ABBREVIATIONS

SHEET KEY NOTES

- ① DEMOLITION OF EXTG TEAGUE RESERVOIR TANK - SEE GENERAL NOTES FOR TANK DEMOLITION, AND SEE DETAIL 3, SHEET C-501 FOR MORE INFORMATION
- ② EXTG 1" WATER SERVICE
- ③ NEW 1" WATER SERVICE, VERIFY LOCATION WITH OWNER

GENERAL NOTES FOR TANK DEMOLITION

1. OBTAIN AND DELIVER A DEMOLITION PERMIT TO THE OWNER.
2. REMOVE AND SALVAGE OR DISPOSE OF ROOF STRUCTURE AND MATERIALS OFF-SITE.
3. MAKE A MINIMUM OF 4 - 1' DIAMETER HOLES IN THE BOTTOM OF THE RESERVOIR TANK FLOOR FOR DRAINAGE. THE HOLES SHALL BE EQUALLY SPACED ACROSS THE BOTTOM OF THE FLOOR WITH ONE LOCATED AT THE LOWEST POINT OF THE TANK FLOOR.
4. AFTER THE DRAINAGE HOLES IN THE FLOOR ARE COMPLETED, PLACE A MINIMUM OF 15" OF GRAVEL BACKFILL FOR DRAINS, SECTION 9-03.12(4) OF WSDOT M41-10 (LATEST EDITION) OR APPROVED EQUAL, OVER THE BOTTOM OF THE TANK FLOOR PRIOR TO BACKFILLING.
5. THE RESERVOIR TANK WALLS SHALL BE DEMOLISHED AROUND THE ENTIRE STRUCTURE, TAKING THE CONCRETE AND ANY EMBEDDED STEEL DOWN TO EXISTING GROUND SURFACE (APPROXIMATELY 3 FEET). DISPOSE OF THE CONCRETE AND STEEL ON THE INSIDE OF THE RESERVOIR TANK ABOVE THE GRAVEL BACKFILL FOR DRAINS BUT NOT WITHIN 3' OF THE GROUND SURFACE.
6. PLACE AND COMPACT FILL BETWEEN THE TANK DEMOLITION MATERIAL AND THE FINAL GROUND SURFACE. THE TOP 12" OF FILL SHALL BE NATURAL, FRIABLE SOIL REPRESENTATIVE OF PRODUCTIVE, WELL-DRAINED AND GRADED SOILS IN THE AREA, FREE FROM SUBSOIL, STUMPS, ROCKS LARGER THAN 1" IN DIAMETER, BRUSH, WEEDS, TOXIC SUBSTANCES, AND OTHER MATERIALS DETRIMENTAL TO PLANT GROWTH. TOPSOIL NATIVE TO THE AREA OR WELL GRADED, ORGANIC MATERIAL SUITABLE FOR LANDSCAPING. THE REMAINING FILL SHALL BE OF THE SAME MATERIAL AS THE TOP 12" OF FILL EXCEPT THAT IT SHALL NOT CONTAIN ROCKS OR COBBLES GREATER THAN 3" IN DIAMETER.
7. EXISTING VALVES, ON THE SOUTH SIDE OF THE TANK, WILL BE ABANDONED IN PLACE. THE VALVE BOX COVERS ADJACENT TO THE RESERVOIR SHALL BE REMOVED AND PROPERLY RECYCLED OR DISPOSED OF. PLACE CAST-IN-PLACE CONCRETE OR CDF WITHIN 24" OF THE TOP OF THE EXISTING GROUND SURFACE. THE REMAINING VOID SHALL BE RESTORED TO MATCH EXISTING SURFACE WITH NATIVE TOPSOIL IN CONFORMANCE WITH GENERAL NOTE 6, THIS SHEET.



DEMOLITION LEGEND

- ////////// REMOVE STRUCTURE
- ~~~~~ PIPE TO BE ABANDONED



REVISION	BY	DATE	SCALE IN FEET 0 20 40 60
DESIGNED BY D. JEPSEN		JOB NUMBER 250-18	DATE August 11, 2021
DRAWN BY J. CHAPMAN		ACAD FILE: 250-18-060-C-101.DWG	
REVIEWED BY -		COPYRIGHT 2021 BY ANDERSON PERRY & ASSOC., INC.	



CITY OF WHITE SALMON
EL CAMINO REAL WATER LINE IMPROVEMENTS
 2021

DEMOLITION AND SITE PLAN

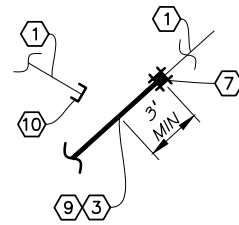
SHEET

C-101

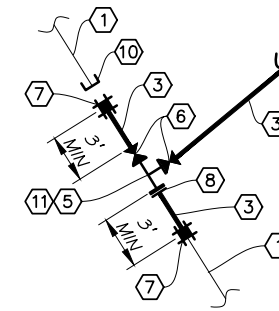
4 OF 6

SHEET KEY NOTES

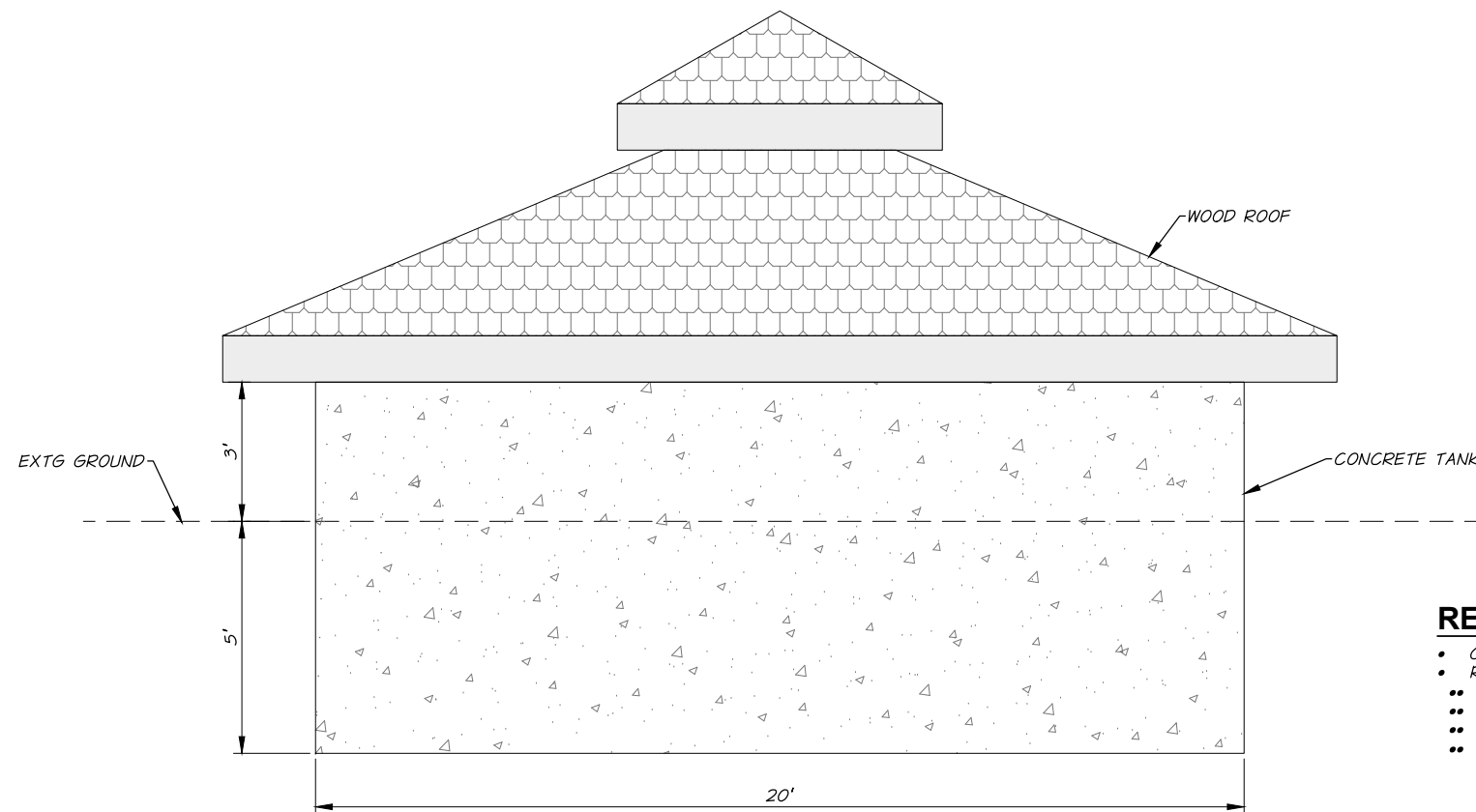
- ① EXTG 6" PIPE
- ② NEW 6" PIPE
- ③ 6" FLG TEE
- ④ 6" FLGxMJ GATE VALVE
- ⑤ 6" TRANSITION COUPLING OR DI SLEEVE
- ⑥ 6" FLGxMJ DI ADAPTER
- ⑦ REMOVE EXTG BEND, PIPE, AND THRUST BLOCK TO MAKE CONNECTION TO EXTG MAIN.
- ⑧ AFTER NEW 6" WATER MAIN IS IN SERVICE, INSTALL 6" RESTRAINED ENDCAP.
- ⑨ AFTER NEW 6" WATER MAIN IS IN SERVICE, CLOSE 6" GATE VALVE LEADING TO EXTG 6" WATER LINE, REMOVE 6" TRANSITION COUPLING/DI SLEEVE, AND INSTALL 6" RESTRAINED END CAP. RETURN 6" TRANSITION COUPLING/DI SLEEVE TO OWNER, REMOVE VALVE BOX COVER, AND FILL VALVE CAN FOR 6" GATE VALVE WITH SAND AND IMPORT AGGREGATE PRIOR TO SURFACE RESTORATION.



1 **DETAIL**
C-101 NTS



2 **DETAIL**
C-101 NTS



RESERVOIR NOTES

- CONCRETE WALLS 6"-8" THICK
- ROOF CONSISTS OF:
 - (27) 2"x12" BEAMS
 - SHEATHING
 - WOOD SHINGLE ROOF
 - (SEE PHOTO P4, SHEET C-502 FOR DETAILS)

3 **TEAGUE RESERVOIR - ELEVATION**
C-101 NTS



DESIGNED BY D. JEPSEN	BY	DATE	JOB NUMBER 250-18 DATE August 11, 2021
DRAWN BY J. CHAPMAN			ACAD FILE: 250-18-060-C-501_502.DWG
REVIEWED BY —			COPYRIGHT 2021 BY ANDERSON PERRY & ASSOC., INC.



CITY OF WHITE SALMON
EL CAMINO REAL WATER LINE IMPROVEMENTS
2021

MISCELLANEOUS DETAILS

SHEET

C-501

5 OF 6



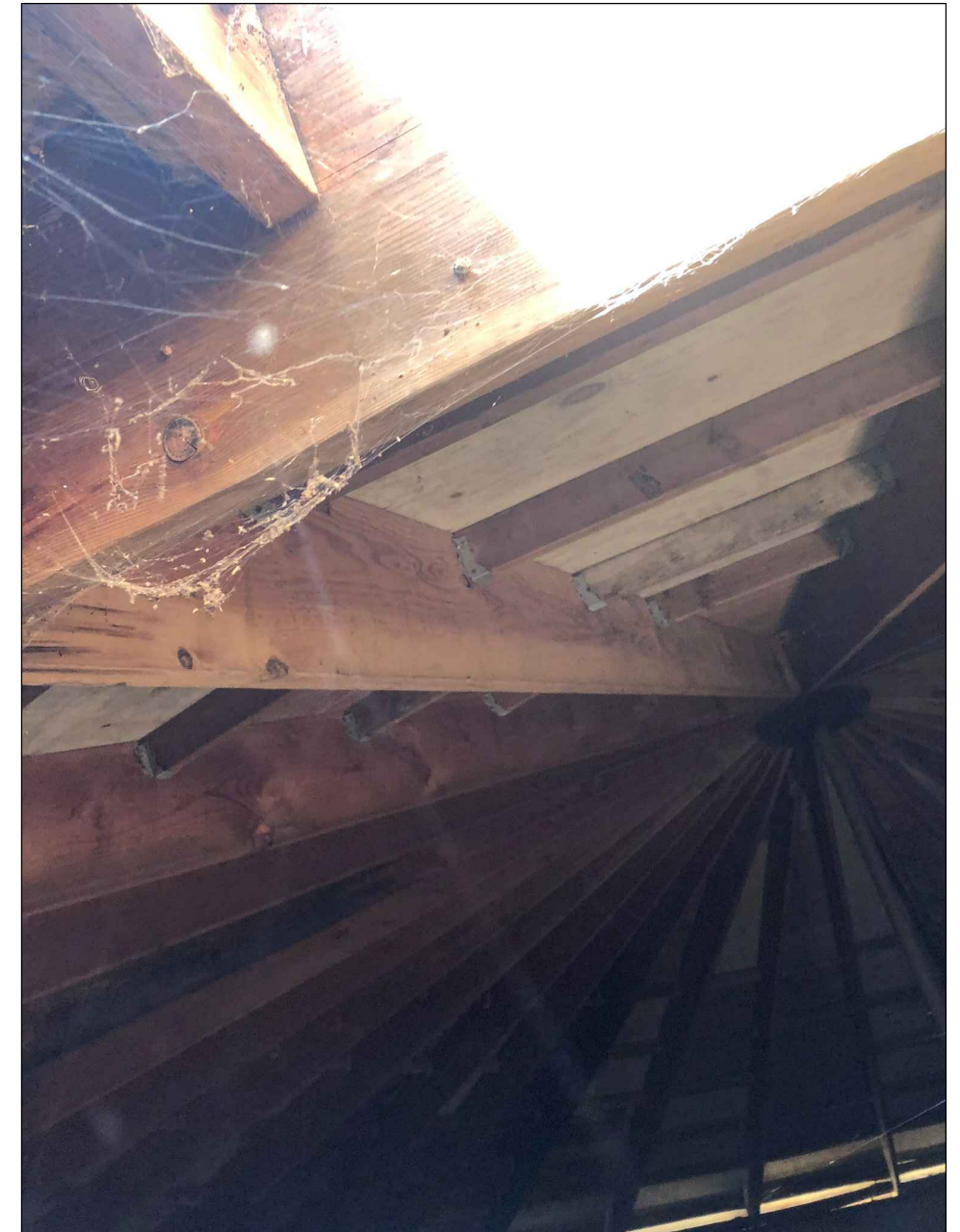
P1
C-101 **6" CONNECTION WITH TEE LOCATION**
VIEW TO NORTHWEST
NTS



P2
C-101 **6" CONNECTION WITH TEE LOCATION**
VIEW TO NORTHEAST
NTS



P3
G-101 **TEAGUE RESERVOIR AND 6" CONNECTION LOCATION**
VIEW TO NORTHWEST
NTS



P4
G-101 **TEAGUE RESERVOIR BEAMS (INTERNAL)**
VIEW TO NORTHWEST
NTS



REVISION	BY	DATE	JOB NUMBER 250-18	DATE August 11, 2021
DESIGNED BY D. JEPSEN			ACAD FILE: 250-18-060-C-501_502.DWG	
DRAWN BY J. CHAPMAN			COPYRIGHT 2021 BY ANDERSON PERRY & ASSOC., INC.	
REVIEWED BY —				



CITY OF WHITE SALMON
EL CAMINO REAL WATER LINE IMPROVEMENTS
2021

PHOTOGRAPHS

SHEET

C-502

6 OF 6