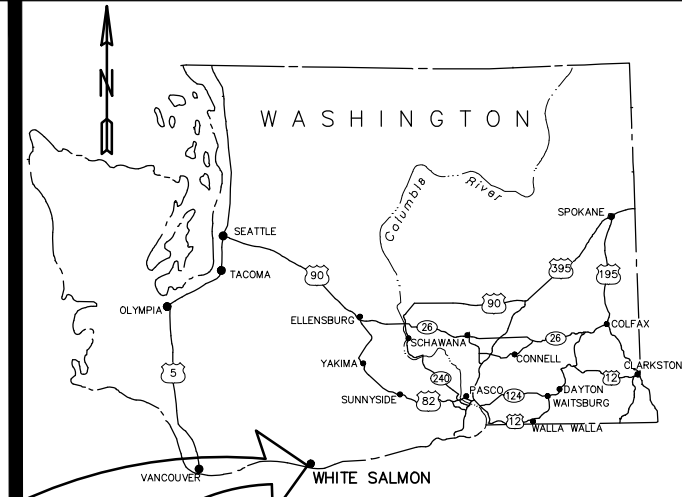


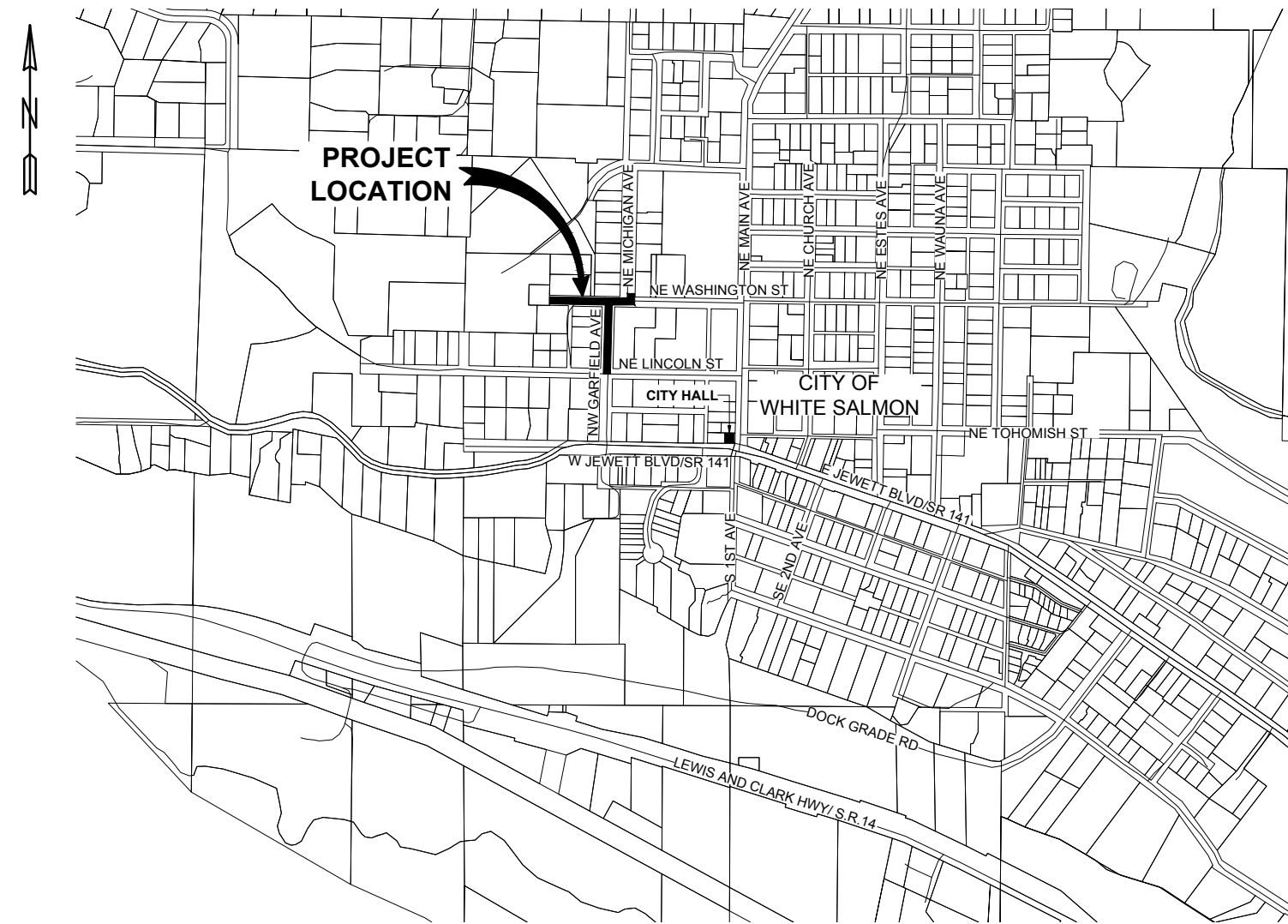
# CITY OF WHITE SALMON, WASHINGTON

## GARFIELD AVENUE WATER LINE IMPROVEMENTS 2021



### INDEX

SHEET NO.	PAGE NO.
G-001 COVER	1
G-002 LEGEND	2
G-003 GENERAL NOTES AND ABBREVIATIONS	3
C-101 PLAN AND PROFILE STA A1+00 TO STA A4+41.43	4
C-102 PLAN AND PROFILE STA B1+00 TO STA B6+00	5
C-501 WATER DETAILS	6



### CITY COUNCIL

- MARLA KEETHLER - Mayor
- JASON HARTMANN
- ASHLEY POST
- DAVID LINDLEY
- JIM RANSIER
- JOE TURKIEWICZ

### CITY OFFICIALS

- PAT MUNYAN - City Administrator/ Public Works Director
- JAN BRENDING - City Clerk/Treasurer
- RUSS AVERY - Operations Manager

### PROJECT FUNDING

CITY OF WHITE SALMON



SHEET  
**G-001**  
1 OF 6

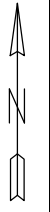
**VICINITY MAP**  
NTS



**ap anderson perry & associates, inc.**  
engineering • surveying • natural resources

214 E. Birch - Walla Walla, WA 99362 Ph: (509)529-9260 Fax: (509)529-8102  
LA GRANDE, OR WALLA WALLA, WA REDMOND, OR HERMISTON, OR

R:\Clients\White Salmon\250-14 Garfield Ave Water Improvements\060 Design\250-14-040-G-001-COV.dwg, 3/25/2021 10:24:04 AM



# LEGEND

## WATER

	EXISTING	PROPOSED
WATER LINE	— — — W — —	— — — 6" W — —
WATER LINE	— — — W — —	— — — W — —
CAP	⌋	⌋
COUPLING	⌌	⌌
REDUCER	▷	▷
THRUST BLOCK	⊞	⊞
WATER METER	⊖	⊖
FIRE HYDRANT	△	△
YARD HYDRANT	◁	◁
FLANGE	⊥	⊥
AIR RELIEF	⊙	⊙
BLOWOFF	⊙	⊙

## SEWER/STORM DRAIN

SANITARY SEWER LINE	— — — SS — — —	— — — 12" SS — — —
SANITARY SEWER SERVICE	— — — SS — — —	— — — 12" SS — — —
STORM DRAIN LINE	— — — SD — — —	— — — 12" SD — — —
SANITARY MANHOLE	⊙	●
SANITARY CLEANOUT	◇	◇
STORM DRAIN MANHOLE	⊙	●
STORM DRAIN CATCH BASIN	□	■

## MISC. UTILITIES

BURIED POWER	— — — P — — —	— — — P — — —
OVERHEAD POWER	— — — P — — —	— — — P — — —
BURIED TELEPHONE	— — — OHT — — —	— — — OHT — — —
OVERHEAD TELEPHONE	— — — OHT — — —	— — — OHT — — —
BURIED TV	— — — TV — — —	— — — TV — — —
OVERHEAD TV	— — — TV — — —	— — — TV — — —
GAS	— — — G — — —	— — — G — — —
IRRIGATION	— — — IRR — — —	— — — IRR — — —
UTILITY POLE	⊖	⊖
UTILITY POLE ANCHOR	←	←
PAD TRANSFORMER	⊠	⊠
POWER VAULT	⊠	⊠
TELEPHONE RISER	⊠	⊠
TELEPHONE VAULT	⊠	⊠
GAS METER	⊠	⊠
GAS VALVE	⊠	⊠
STREET LIGHT	⊙	⊙
YARD LIGHT	⊙	⊙
GUARD POST	⊙	⊙

## SURVEY

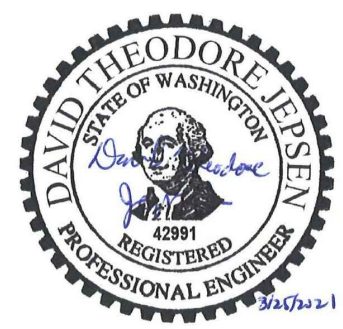
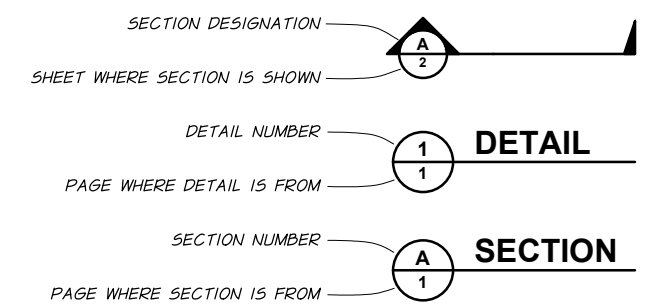
	EXISTING	PROPOSED
ANGLE POINT	△	△
BENCH MARK	⊕	⊕
BLOCK CORNER	⊙	●
IRON PIPE	⊙	●
MONUMENT (IN CASE)	⊕	●
MONUMENT (SURFACE)	⊕	●
OWNERSHIP TIE	↗	↗
MEANDER CORNER	⊕ MC	⊕ MC
WITNESS CORNER	⊕ WC	⊕ WC
SOIL BORING/TEST PIT	⊕	⊕
SPOT ELEVATION	⊕	⊕
CENTERLINE	— — —	— — —
RIGHT-OF-WAY	— — —	— — —
PROPERTY LINE	— — —	— — —
EASEMENT LINE	— · — · —	— · — · —
SECTION LINE	— · — · —	— · — · —

## SURFACE FEATURES

INDEX CONTOUR	— 740 —	— 740 —
INTERMEDIATE CONTOUR	— · — · —	— · — · —
CREEK/DITCH CENTERLINE	— · — · —	— · — · —
RIVERBANK/ShORELINE	— — —	— — —
EDGE ASPHALT/CONCRETE	— — —	— — —
EDGE GRAVEL	— · — · —	— · — · —
FENCE LINE/GATE	— x — x —	— x — x —
GUARDRAIL	— ⊠ — ⊠ —	— ⊠ — ⊠ —
DAYLIGHT/CATCH POINT	⊕	⊕
TREE, CONIFER	⊙	⊙
TREE, DECIDUOUS	⊙	⊙
SHRUB/BRUSH	⊙	⊙
SIGN	⊕	⊕
MAILBOX	⊕	⊕
BUILDING	⊠ 728	⊠ 728
EMBANKMENT/SLOPE	⊕	⊕

## RESTORATION

	EXISTING	PROPOSED
ASPHALT OVERLAY	⊠	⊠
ASPHALT RESTORATION AND OVERLAY	⊠	⊠
GRAVEL HATCH	⊠	⊠
CONCRETE HATCH	⊠	⊠
GRASS/SOD HATCH	⊠	⊠



REVISION	BY	DATE	JOB NUMBER	DATE
DESIGNED BY D. JEPSEN			250-14	March 25, 2021
DRAWN BY N. EATON			ACAD FILE: 250-14-040-G-002-LEG.DWG	
REVIEWED BY B. VIXIE			COPYRIGHT 2021 BY ANDERSON PERRY & ASSOC., INC.	



**CITY OF WHITE SALMON**  
**GARFIELD AVENUE WATER LINE IMPROVEMENTS**  
 2021

LEGEND

R:\Clients\White Salmon\250-14-Garfield Ave Water Improvements\0610 Design\250-14-040-G-002-LEG.dwg, 3/25/2021 10:24:12 AM

**GENERAL NOTES**

1. THESE DRAWINGS SHALL BE COORDINATED AND USED IN CONJUNCTION WITH THE CITY OF WHITE SALMON DEVELOPER STANDARDS FOR THE CONSTRUCTION AND ACCEPTANCE OF WATER AND SEWAGE FACILITIES (DEVELOPER STANDARDS), SEPTEMBER 5, 2018, AND AS AMENDED, AND APPROVED SUBMITTALS.
2. UTILITIES SHOWN ON THE PLANS ARE BASED ON LOCATES PROVIDED BY VARIOUS UTILITIES FOR THE BASE BID WORK. ADDITIVE UTILITY LOCATES ARE NEEDED FOR ALTERNATIVE NO. 1 WORK TO DETERMINE IF ANY CONFLICTS OCCUR. SOME DISCREPANCIES AND OMISSIONS IN LOCATION, TYPE, AND SIZE SHOULD BE EXPECTED TO OCCUR. A SURVEY OF THE PROJECT SITE HAS NOT BEEN COMPLETED.
3. THE CONTRACTOR SHALL BE RESPONSIBLE FOR LOCATING AND PROTECTING ALL EXISTING UTILITIES, BOTH PUBLIC AND PRIVATE, IN AND AROUND THE WORK AREA. THE CONTRACTOR SHALL MAKE ANY ADVANCE EXPLORATION NECESSARY TO PROPERLY PLAN THE INSTALLATION OF PIPE TO THE LINE AND GRADE SHOWN ON THE DRAWINGS. THIS INCLUDES POTHOLING, WHICH SHALL SUFFICIENTLY PRECEDE LAYING OF PIPE TO ALLOW FOR ANY REQUIRED VERTICAL OR HORIZONTAL GRADE ADJUSTMENTS OF PIPE ALIGNMENT TO BE MADE WITHOUT REWORK. ELEVATION ADJUSTMENTS AT UTILITY LINE CROSSING SHALL BE EXPECTED AND CONSIDERED INCIDENTAL TO THE WORK. ANY DISCREPANCIES BETWEEN THE DRAWINGS AND EXISTING CONDITIONS SHALL BE IMMEDIATELY BROUGHT TO THE ATTENTION OF THE OWNER AND DOCUMENTED ON THE RECORD DRAWINGS.
4. ALL AREAS DISTURBED BY CONSTRUCTION ACTIVITIES SHALL BE RESTORED TO PRE-EXISTING OR BETTER CONDITIONS.
5. THE WATER LINE ALIGNMENT AND DETAILS ON THESE SHEETS ARE SCHEMATIC IN NATURE. THE CONTRACTOR SHALL INSTALL THE WATER LINES AS MAY BE REQUIRED IN THE FIELD TO SATISFY THE INTENDED DESIGN AND AS APPROVED BY THE OWNER. THE CONTRACTOR MAY PROPOSE ALTERNATE ALIGNMENTS AND COMBINATION OF FITTINGS.
6. HORIZONTAL AND VERTICAL BENDS ARE SHOWN WHERE NECESSARY. ADDITIONAL BENDS MAY BE NECESSARY DEPENDING ON EXACT LOCATION OF EXISTING UTILITIES, ETC. THE CONTRACTOR SHALL NOT EXCEED MANUFACTURER'S RECOMMENDATION FOR JOINT DEFLECTION.
7. CONNECTIONS TO EXISTING WATER LINES MAY REQUIRE TEMPORARY SHUTDOWNS OF EXISTING FACILITIES. THE CONTRACTOR SHALL COORDINATE THIS WORK WITH THE OWNER, THE AFFECTED PROPERTY OWNERS AND UTILITIES AND REQUEST SHUTDOWNS A MINIMUM OF 72 HOURS IN ADVANCE OF DESIRED TIMING OF THE CONNECTION WORK. THE CONTRACTOR SHALL NOT ASSUME SHUTDOWN TIMES, BUT RATHER SCHEDULE AND COORDINATE SHUTDOWNS.
8. OPERATION OF EXISTING VALVES AND FACILITIES SHALL BE PERFORMED BY OWNER PERSONNEL UNLESS PERMISSION IS OBTAINED FROM THE OWNER FOR OPERATION OF THE EXISTING SYSTEM BY THE CONTRACTOR.
9. THE CONTRACTOR SHALL PROVIDE TEMPORARY TAPS, BLOWOFFS, FITTINGS AND THRUST BLOCKS AS REQUIRED TO FACILITATE FLUSHING, TESTING AND DISINFECTION OF NEW WATER LINES. AT COMPLETION OF DISINFECTION AND TESTING, ALL TEMPORARY TEST TAPS SHALL BE REPLACED WITH PERMANENT PLUGS.
10. AT THE END OF EACH WORKDAY, ALL OPEN TRENCHES SHALL BE BACKFILLED OR TEMPORARILY COVERED TO THE SATISFACTION OF THE ENGINEER.
11. CONTRACTOR SHALL POTHOLE SUFFICIENTLY AHEAD TO DETERMINE THE DEPTH OF EACH EXISTING UTILITY WHERE IT CROSSES THE NEW MAIN TO MAINTAIN SLOPE DIRECTION, AVOID ANY HIGH POINTS, AND AVOID ANY CONFLICTS WITH THE EXISTING UTILITIES. IF THE NEW MAIN CAN NOT BE INSTALLED OVER THE EXISTING UTILITY WHILE PROVIDING MINIMUM COVER THEN THE NEW MAIN SHALL BE INSTALLED BELOW THE EXISTING UTILITY. NO ADDITIONAL PAYMENT WILL BE MADE FOR DEEPER INSTALLATIONS NECESSARY TO MAINTAIN SLOPE DIRECTION OR TO AVOID UTILITY CROSSINGS.
12. ANY OBSTRUCTION ENCOUNTERED THAT MAY NOT BE SHOWN ON THE PLANS SHALL BE IMMEDIATELY BROUGHT TO THE ATTENTION OF THE OWNER. ITEMS VISIBLE IN THE FIELD ARE THE CONTRACTOR'S RESPONSIBILITY, EVEN IF NOT SHOWN ON THE PLANS.
13. ALL VALVES, TEES, BENDS, AND FITTINGS SHALL HAVE THRUST BLOCKS, ANCHORS, OR TIES WITH SUFFICIENT BEARING AREA, EMBEDMENT, AND SIZE AS REQUIRED IN CITY OF WHITE SALMON STANDARD DETAILS W-D3, W-D13, W-D14, AND W-D15.

**PIPE SCHEDULE**

WHERE NOT SPECIFICALLY NOTED ON THE DRAWINGS, OR OTHERWISE SPECIFIED, PIPE SHALL BE INSTALLED IN ACCORDANCE WITH THE FOLLOWING SCHEDULE AND OWNER'S DEVELOPER STANDARDS.

SIZE	PIPING	JOINTS AND FITTINGS
6" AND 8" WATER MAIN	PVC, AWWA C900, PRESSURE CLASS 235 PSI, DR 18	PUSH-ON, DIP, CEMENT-LINED, FLG/MJ. AWWA C110, C111, AND C153
2" WATER PIPE	HDPE, CTS, CLASS 200	COMPRESSION COUPLINGS OR BUTT FUSION, HDPE OR BRASS FITTINGS
2" WATER PIPE FOR CONNECTIONS TO VALVES, BLOWOFFS, AND EXISTING LINES	BRASS, SCH 40	THREADED OR FLANGED, BRASS FITTINGS, DI FITTINGS AS APPROVED
1" SERVICE LINES	PEX, CTS, AWWA C904, ASTM F876/F877	COMPRESSION COUPLINGS AWWA C800

**ABBREVIATIONS**

AC	ASBESTOS-CEMENT
AWWA	AMERICAN WATER WORKS ASSOCIATION
BOC	BACK OF CURB
CB	CATCH BASIN
CDF	CONTROL DENSITY FILL
CL	CENTERLINE
C5BC	CRUSHED SURFACING BASE COURSE
C5TC	CRUSHED SURFACING TOP COURSE
CTS	COPPER TUBE SIZE
DI	DUCTILE IRON
ELEV	ELEVATION
EOP	END OF PAVING
ESCP	EROSION AND SEDIMENT CONTROL PLAN
EST	ESTIMATED
EVCE	END VERTICAL CURVE ELEVATION
EXTG	EXISTING
FDC	FIRE DEPARTMENT CONNECTION
FG	FINISH GRADE
FL	FLOW LINE
FLG	FLANGE
FOC	FACE OF CURB
GB	GRADE BREAK
HDPE	HIGH DENSITY POLYETHYLENE
HMA	HOT MIX ASPHALT
IE	INVERT ELEVATION
LP	LOW POINT
LT	LEFT
MAX	MAXIMUM
ME	MATCH EXISTING
MIN	MINIMUM
MJ	MECHANICAL JOINT
MSC	MISCELLANEOUS
MSL	MEAN SEA LEVEL
NE	NORTHEAST
NW	NORTHWEST
PC	POINT OF CURVE
PEX	CROSS-LINKED POLYETHYLENE
PIV	POST INDICATOR VALVE
PL	PROPERTY LINE
PROJ	PROJECTED
PSI	POUNDS PER SQUARE INCH
PT	POINT OF TANGENT
PUE	PUBLIC UTILITY EASEMENT
PVC	POLYVINYL CHLORIDE
PVI	POINT OF VERTICAL INTERSECTION
REQ'D	REQUIRED
ROW	RIGHT-OF-WAY
RT	RIGHT
SD	STORM DRAIN
SDMH	STORM DRAIN MANHOLE
SE	SOUTHEAST
SR	STATE ROUTE
SS	SANITARY SEWER
SSMH	SANITARY SEWER MANHOLE
STA	STATION
STD	STANDARD
STL	STEEL
SW	SOUTHWEST
TBC	TOP BACK OF CURB
TBDC	TOP BACK OF DEPRESSED CURB
TC	TOP OF CURB
TP	TOP OF PAVEMENT
TYP	TYPICAL
VC	VERTICAL CURVE
WM	WATER MAIN
WSDOT	WASHINGTON STATE DEPARTMENT OF TRANSPORTATION



REVISION	BY	DATE	JOB NUMBER 250-14	DATE March 25, 2021
DESIGNED BY D. JEPSEN			ACAD FILE: 250-14-040-G-003-GEN.DWG	
DRAWN BY N. EATON			COPYRIGHT 2021 BY ANDERSON PERRY & ASSOC., INC.	
REVIEWED BY B. VIXIE				



**CITY OF WHITE SALMON**  
**GARFIELD AVENUE WATER LINE IMPROVEMENTS**  
 2021

GENERAL NOTES AND ABBREVIATIONS

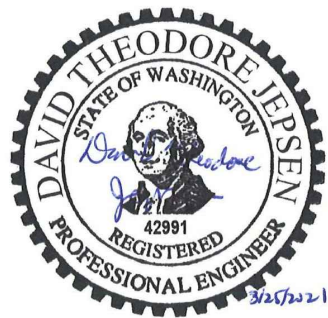
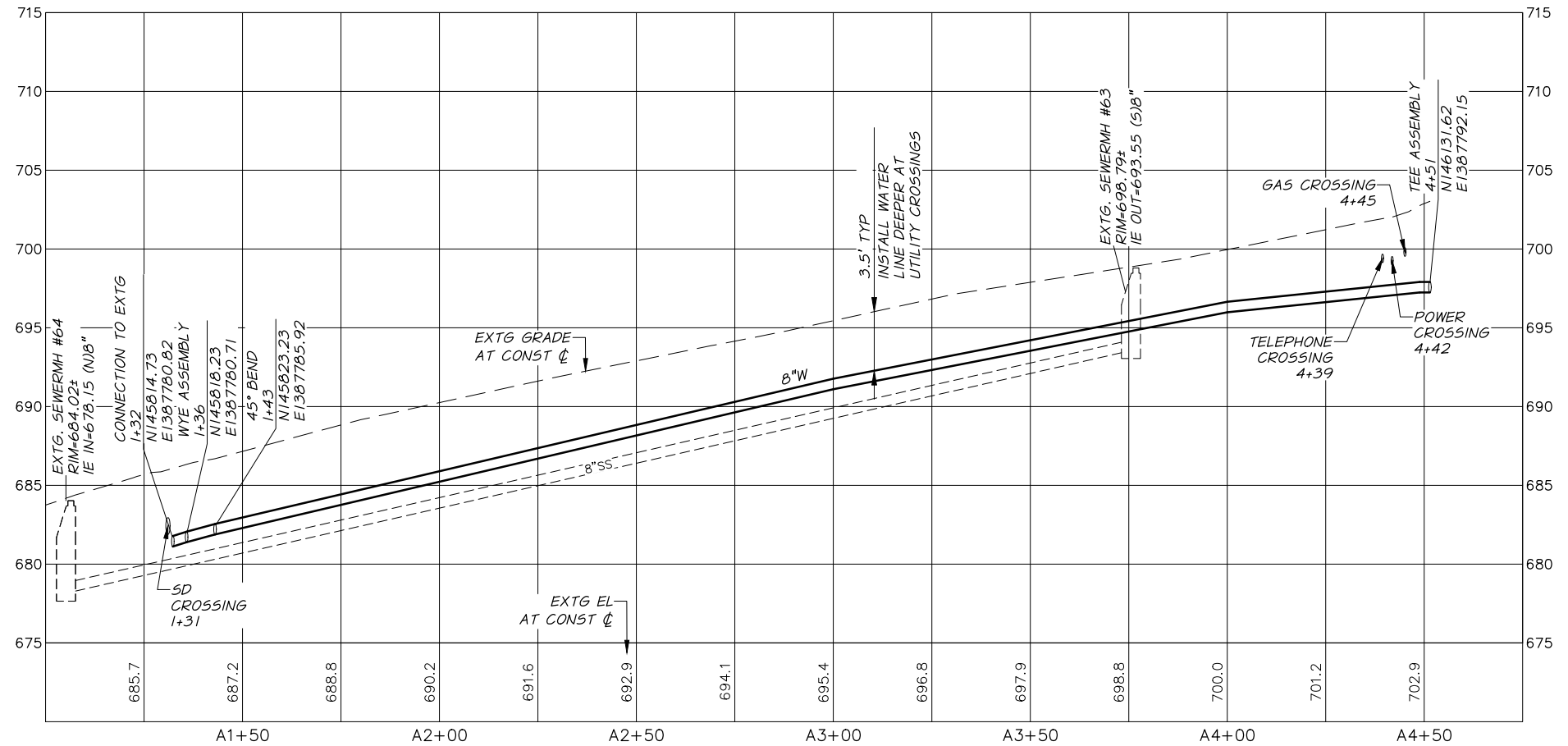
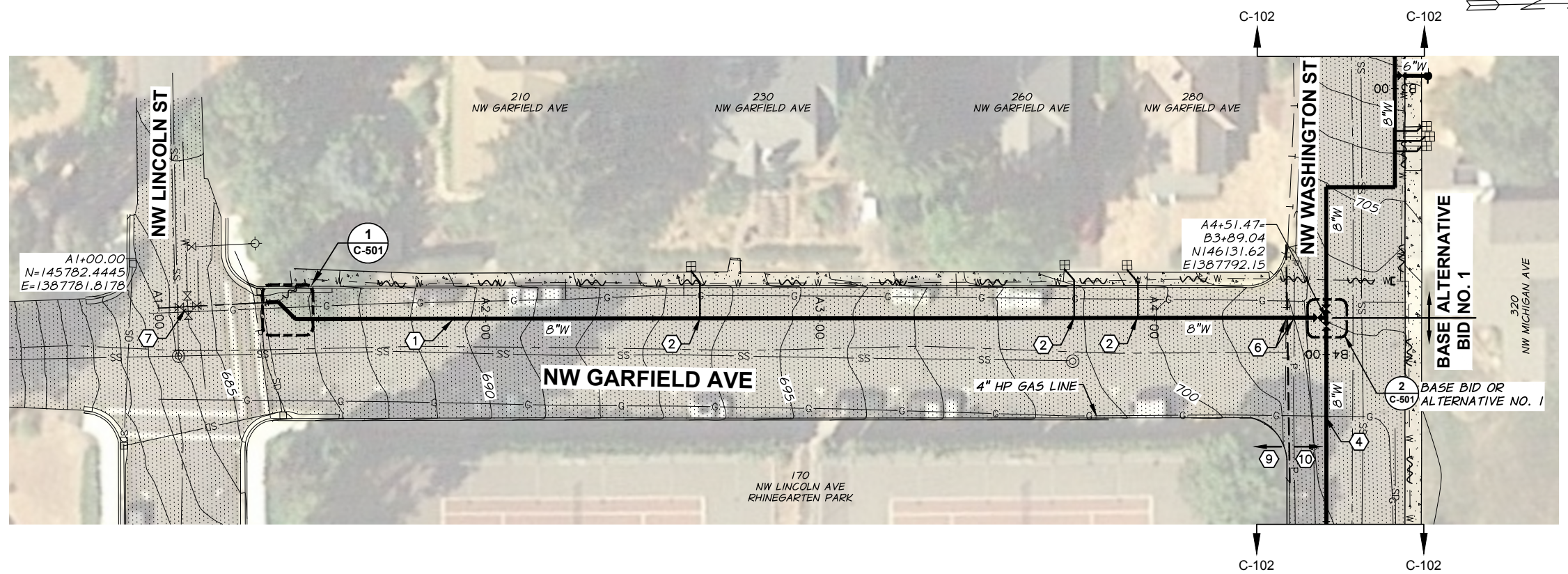
SHEET

**G-003**

3 OF 6

# SHEET KEY NOTES

- ① NEW WATER MAIN. SEE CITY OF WHITE SALMON STD DETAIL W-D1 FOR TRENCH SECTIONS, BACKFILL, AND RESTORATION DETAILS.
- ② SERVICE CONNECTION TO NEW WATER MAIN AND EXTG WATER METER. SEE CITY OF WHITE SALMON STD DETAIL W-D10 FOR 1" SERVICES.
- ③ REMOVE EXTG TEE, VALVES AND FITTINGS.
- ④ 4" HIGH PRESSURE GAS LINE CROSSING. CONTRACTOR TO FIELD VERIFY LOCATION PRIOR TO CONSTRUCTION. DISTANCE BETWEEN GROUND SURFACE AND TOP OF HIGH PRESSURE GAS LINE IS REPORTED TO BE 3'-10"±.
- ⑤ NON-POTABLE UTILITY CROSSING. CONTRACTOR TO FIELD VERIFY LOCATION PRIOR TO CONSTRUCTION.
- ⑥ UTILITY CROSSING, CONTRACTOR TO FIELD VERIFY LOCATION PRIOR TO CONSTRUCTION.
- ⑦ DISTANCE FROM GROUND SURFACE TO VALVE NUT IS APPROX 30".
- ⑧ DISTANCE FROM GROUND SURFACE TO VALVE NUT IS APPROX 34".
- ⑨ INSTALLED IF ALTERNATIVE NO. 1 SELECTED.
- ⑩ EXTG WATERLINE TO BE ABANDONED ONLY IF ALTERNATIVE NO. 1 IS SELECTED, IF ALTERNATIVE NO. 1 IS NOT SELECTED, THE EXTG WATERLINE SHALL REMAIN IN SERVICE. SEE WATER DETAILS ON SHEET C-501 FOR ADDITIONAL INFORMATION.
- ⑪ AREA NOT REQUIRING ASPHALT SURFACE RESTORATION. IMPORT AGGREGATE SHALL BE PLACED AND COMPACTED IN TRENCH TO GROUND SURFACE AND MAINTAINED.
- ⑫ AREA REQUIRING ASPHALT RESTORATION.



DESIGNED BY D. JEPSEN	JOB NUMBER 250-14	DATE March 25, 2021
DRAWN BY N. EATON	ACAD FILE: 250-14-060-C-101-SIT.DWG	
REVIEWED BY B. VIXIE	COPYRIGHT 2021 BY ANDERSON PERRY & ASSOC., INC.	



**CITY OF WHITE SALMON**  
**GARFIELD AVENUE WATER LINE IMPROVEMENTS**  
**2021**

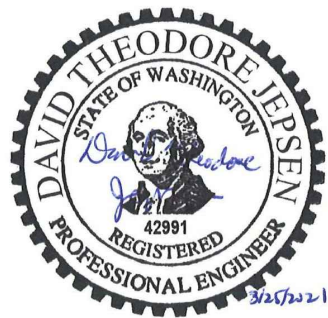
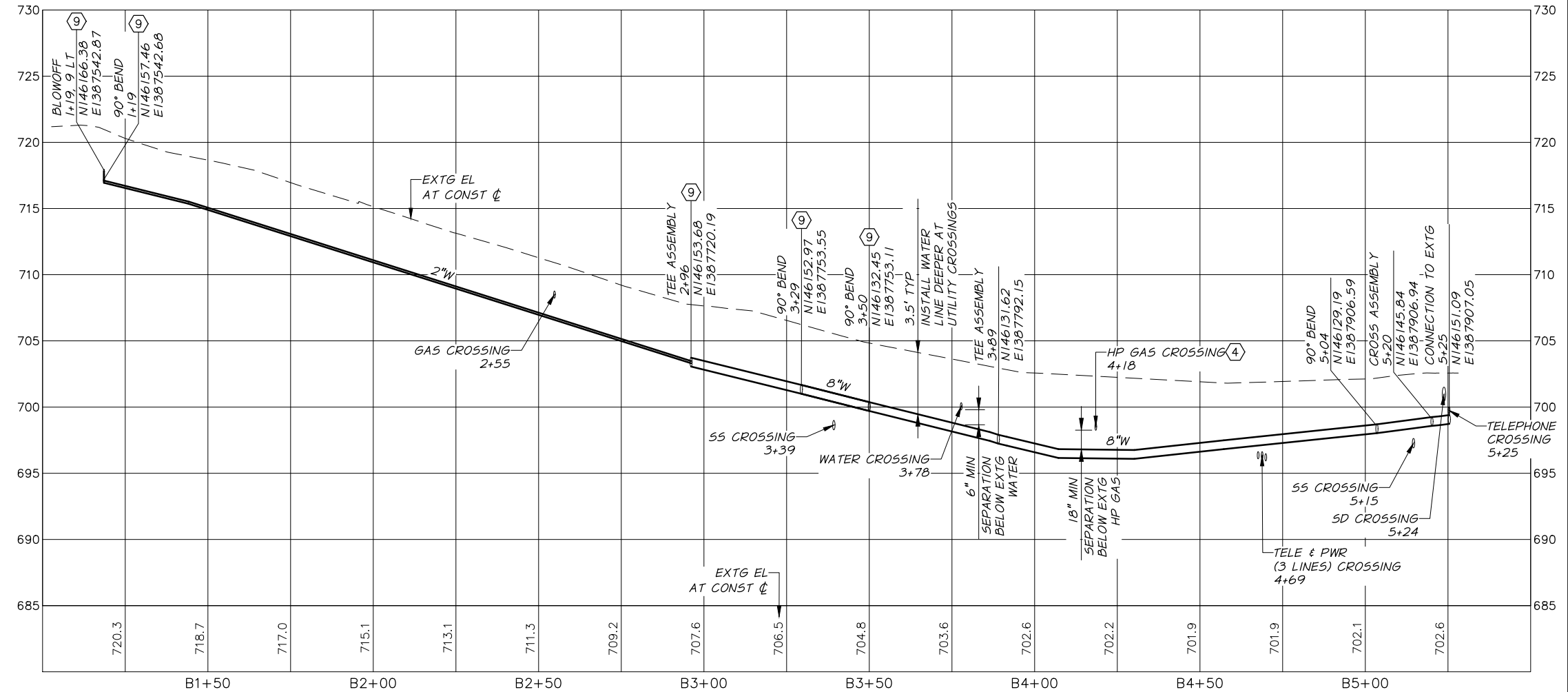
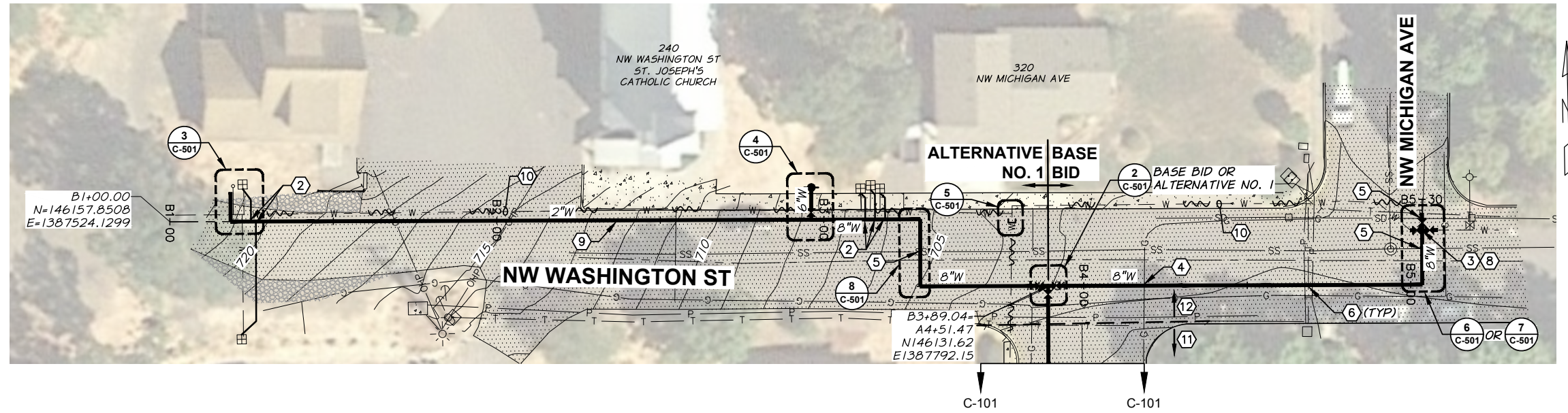
PLAN AND PROFILE STA A1+00 TO STA A4+41.43

SHEET  
**C-101**  
 4 OF 6

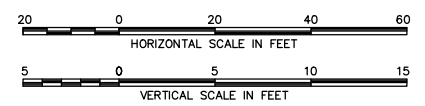
R:\Clients\White Salmon\250-14-Garfield Ave Water Improvements\060 Design\250-14-060-C-101-SIT.dwg, 3/25/2021 10:24:31 AM

# SHEET KEY NOTES

- ① NEW WATER MAIN. SEE CITY OF WHITE SALMON STD DETAIL W-D1 FOR TRENCH SECTIONS, BACKFILL, AND RESTORATION DETAILS.
- ② SERVICE CONNECTION TO NEW WATER MAIN AND EXTG WATER METER. SEE CITY OF WHITE SALMON STD DETAIL W-D10 FOR 1" SERVICES.
- ③ REMOVE EXTG TEE, VALVES AND FITTINGS.
- ④ 4" HIGH PRESSURE GAS LINE CROSSING. CONTRACTOR TO FIELD VERIFY LOCATION PRIOR TO CONSTRUCTION. DISTANCE BETWEEN GROUND SURFACE AND TOP OF HIGH PRESSURE GAS LINE IS REPORTED TO BE 3'-10".
- ⑤ NON-POTABLE UTILITY CROSSING. CONTRACTOR TO FIELD VERIFY LOCATION PRIOR TO CONSTRUCTION.
- ⑥ UTILITY CROSSING, CONTRACTOR TO FIELD VERIFY LOCATION PRIOR TO CONSTRUCTION.
- ⑦ DISTANCE FROM GROUND SURFACE TO VALVE NUT IS APPROX 30".
- ⑧ DISTANCE FROM GROUND SURFACE TO VALVE NUT IS APPROX 34".
- ⑨ INSTALLED IF ALTERNATIVE NO. 1 SELECTED.
- ⑩ EXTG WATERLINE TO BE ABANDONED ONLY IF ALTERNATIVE NO. 1 IS SELECTED, IF ALTERNATIVE NO. 1 IS NOT SELECTED, THE EXTG WATERLINE SHALL REMAIN IN SERVICE. SEE WATER DETAILS ON SHEET C-501 FOR ADDITIONAL INFORMATION.
- ⑪ AREA NOT REQUIRING ASPHALT SURFACE RESTORATION. IMPORT AGGREGATE SHALL BE PLACED AND COMPACTED IN TRENCH TO GROUND SURFACE AND MAINTAINED.
- ⑫ AREA REQUIRING ASPHALT RESTORATION.



DESIGNED BY D. JEPSEN	DATE March 25, 2021
DRAWN BY N. EATON	ACAD FILE: 250-14-060-C-101-SIT.DWG
REVIEWED BY B. VIXIE	COPYRIGHT 2021 BY ANDERSON PERRY & ASSOC., INC.



**CITY OF WHITE SALMON**  
**GARFIELD AVENUE WATER LINE IMPROVEMENTS**  
**2021**  
**PLAN AND PROFILE STA B1+00 TO STA B6+00**










SHEET  
**C-102**  
 5 OF 6

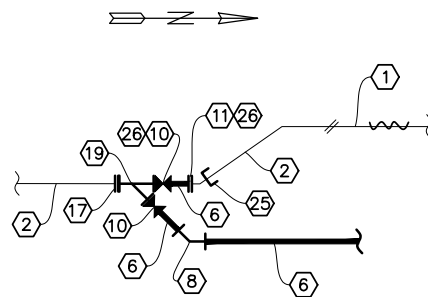
R:\Clients\White Salmon\250-14-Garfield Ave Water Improvements\060 Design\250-14-060-C-101-SIT.dwg, 3/25/2021 10:24:33 AM

# PIPE AND FITTING SCHEDULE

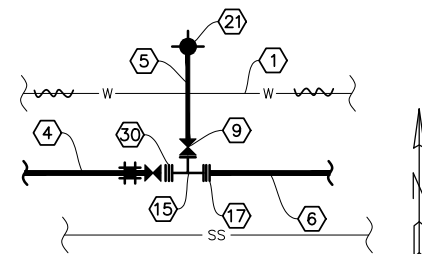
- ① EXTG 3" PIPE.
- ② EXTG 8" PIPE.
- ③ EXTG 6" PIPE.
- ④ NEW 2" PIPE.
- ⑤ NEW 6" PIPE.
- ⑥ NEW 8" PIPE.
- ⑦ NEW 1" SERVICE.
- ⑧ 8" MJ 45° BEND.
- ⑨ 6" FLGxMJ GATE VALVE.
- ⑩ 8" FLGxMJ GATE VALVE.
- ⑪ 8" TRANSITION COUPLING/DI SLEEVE.
- ⑫ 8"x6" FLGxMJ REDUCER.
- ⑬ 8" 90° MJ BEND.
- ⑭ 8" FLG TEE.
- ⑮ 8"x6" FLG TEE.
- ⑯ INSTALL 8" BLIND FLG ON WEST END OF TEE (BASE BID ONLY).
- ⑰ 8" FLGxMJ ADAPTER.
- ⑱ RESERVED.
- ⑲ 8" FLG WYE.
- ⑳ BLOWOFF ASSEMBLY, SEE CITY OF WHITE SALMON STD DETAIL W-D9.
- ㉑ FIRE HYDRANT ASSEMBLY, SEE CITY OF WHITE SALMON STD DETAIL W-D3.
- ㉒ 3" TRANSITION COUPLING/DI SLEEVE.
- ㉓ 8" FLG GATE VALVE.
- ㉔ 6" TRANSITION COUPLING/DI SLEEVE.
- ㉕ END CAP, SIZE AS REQ'D. INSTALL AND RESTRAIN CAP ON EXTG MAIN AFTER NEW MAIN AND SERVICES HAVE BEEN CONSTRUCTED AND SATISFACTORY TESTING HAS BEEN RECEIVED AND APPROVED.
- ㉖ REMOVE TRANSITION COUPLING AND 8" GATE VALVE, AND INSTALL 8" BLIND FLG ON NORTH SIDE OF 8" WYE AFTER NEW MAIN AND SERVICES HAVE BEEN CONSTRUCTED, AND SATISFACTORY TESTING HAS BEEN RECEIVED AND APPROVED. THE 8" GATE VALVE AND TRANSITION COUPLING SHALL BE DELIVERED TO THE OWNER.
- ㉗ 2" 90° BEND.
- ㉘ REMOVE EXTG BLOWOFF ASSEMBLY.
- ㉙ CAP EXTG WATER MAIN IF ALTERNATIVE NO. 1 IS NOT SELECTED.
- ㉚ 8" BLIND FLG WITH 2" THREADED TAP, 2" THREADED GATE VALVE, 2" BRASS NIPPLE (EACH SIDE OF VALVE), AND 2" TRANSITION COUPLING.
- ㉛ 8" FLG CROSS.
- ㉜ 8"x3" FLG REDUCER.
- ㉝ 3" FLGxMJ GATE VALVE.

## LEGEND

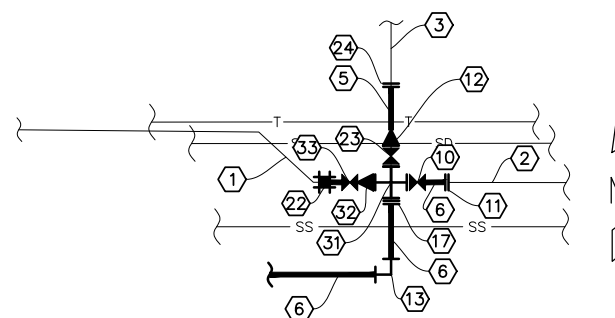
-  PROPOSED WATER
-  EXISTING WATER
-  EXISTING WATER TO BE ABANDONED
-  PROPOSED FIRE HYDRANT
-  EXISTING FIRE HYDRANT
-  PROPOSED VALVE
-  EXISTING VALVE
-  EXISTING WATER METER
-  PROPOSED CAP



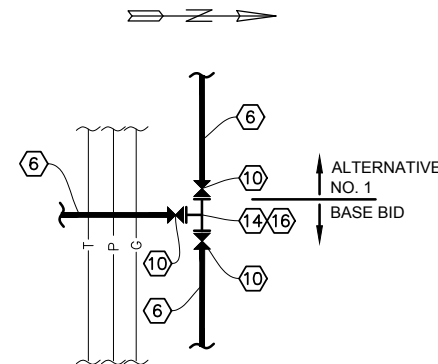
**1** **DETAIL**  
C-101 NTS



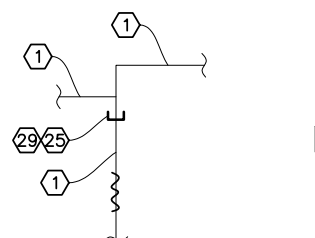
**4** **DETAIL**  
C-102 ALTERNATIVE NO. 1  
NTS



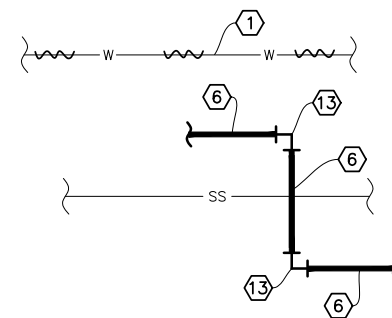
**7** **DETAIL**  
C-102 NTS



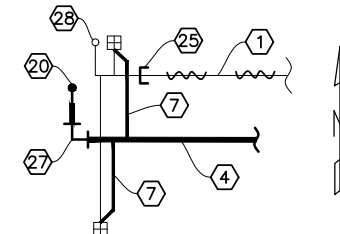
**2** **DETAIL**  
MULTI NTS



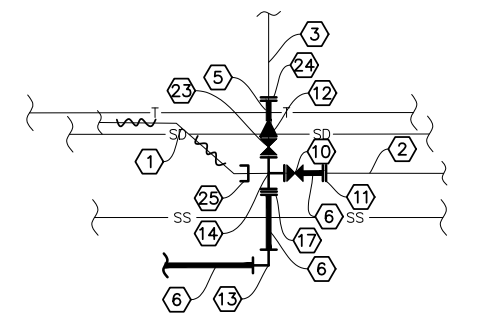
**5** **DETAIL**  
C-102 NTS



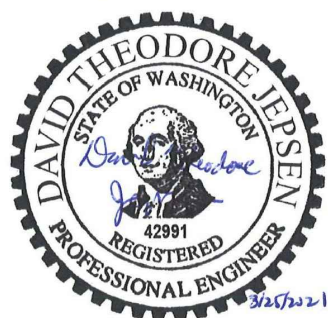
**8** **DETAIL**  
C-102 ALTERNATIVE NO. 1  
NTS



**3** **DETAIL**  
C-102 ALTERNATIVE NO. 1  
NTS



**6** **DETAIL**  
C-102 ALTERNATIVE NO. 1  
NTS



DESIGNED BY D. JEPSEN	DATE March 25, 2021
DRAWN BY N. EATON	ACAD FILE: 250-14-060-C-501.DWG
REVIEWED BY B. VIXIE	COPYRIGHT 2021 BY ANDERSON PERRY & ASSOC., INC.



**CITY OF WHITE SALMON**  
GARFIELD AVENUE WATER LINE IMPROVEMENTS  
2021

WATER DETAILS

SHEET

**C-501**

6 OF 6