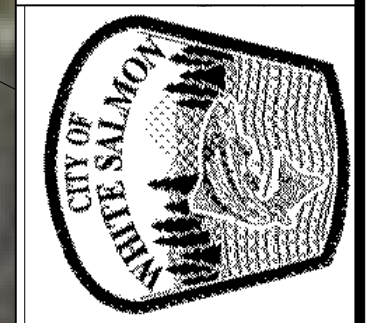
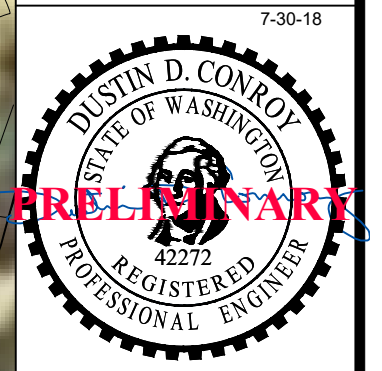


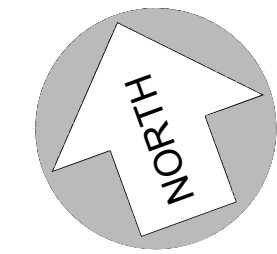
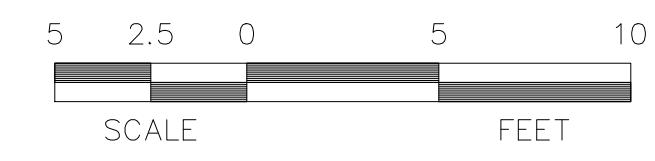
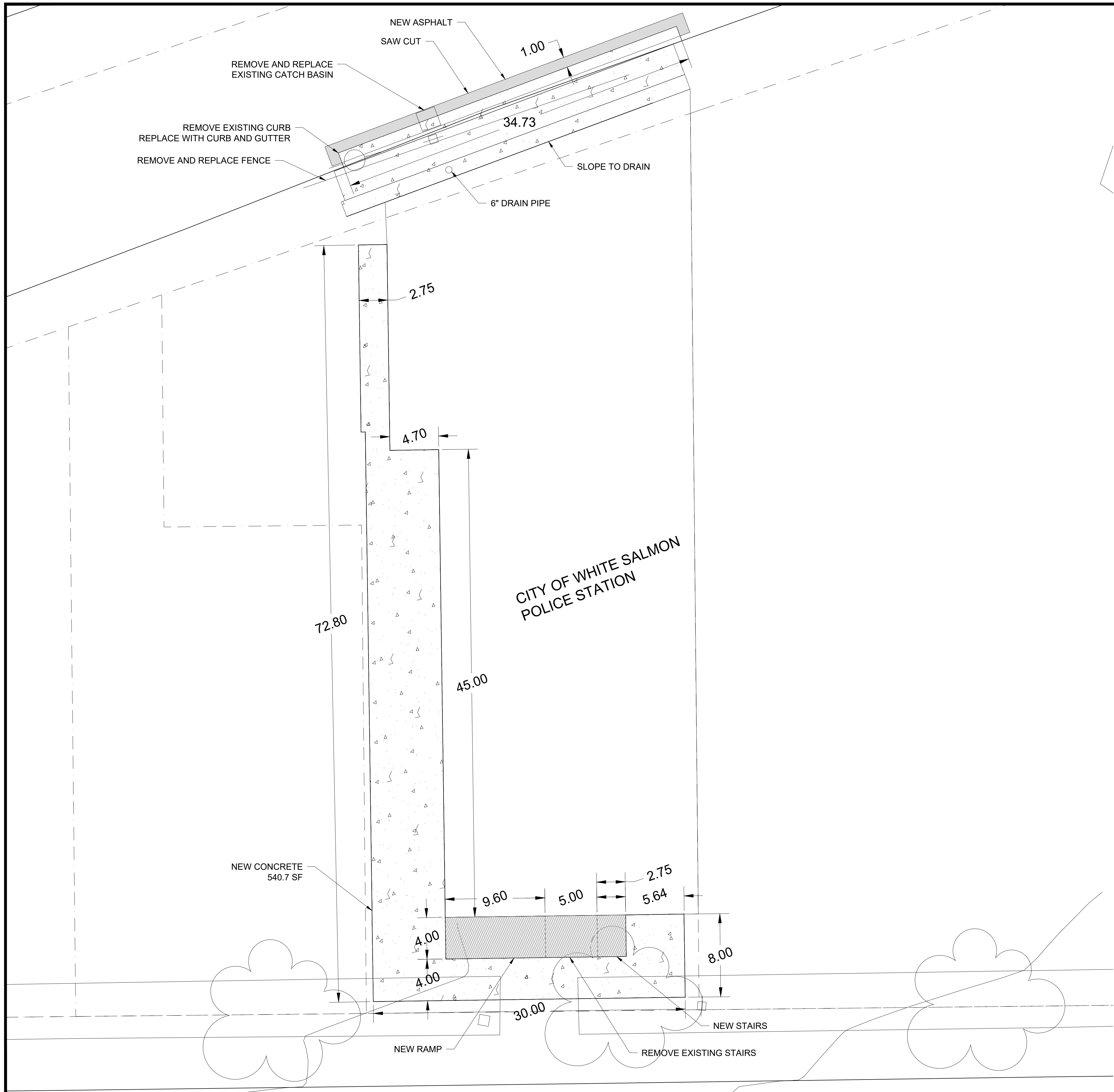
Pioneer Surveying & Engineering, Inc.
 Civil/Structural Engineering and Land Planning
 125 E. Simcoe Drive
 Goldendale, Washington 98620
 Phone (509) 773-4945, Fax (509) 773-5888, E-Mail pse@gorge.net



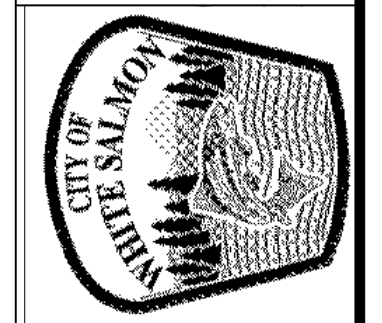
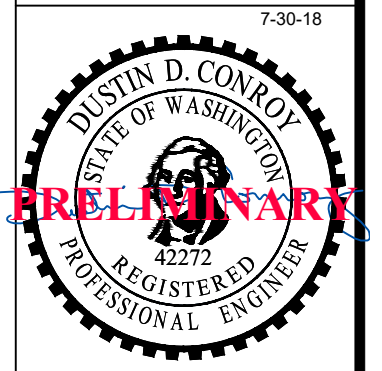
**City of White Salmon
 Public Works Department**
 PO BOX 2139
 Jewett Blvd.
 White Salmon,
 98672 509-493-1133

No.	Date	Revisions
1.0	10-8-19	SUBMITTED FOR REVIEW

SCALE: AS NOTED
 JOB NO. **19-701** REV. **0**



Pioneer Surveying & Engineering, Inc.
Civil/Structural Engineering and Land Planning
125 E. Simcoe Drive
Goldendale, Washington 98620
Phone (509) 773-4945, Fax (509) 773-5888, E-Mail pse@gorge.net

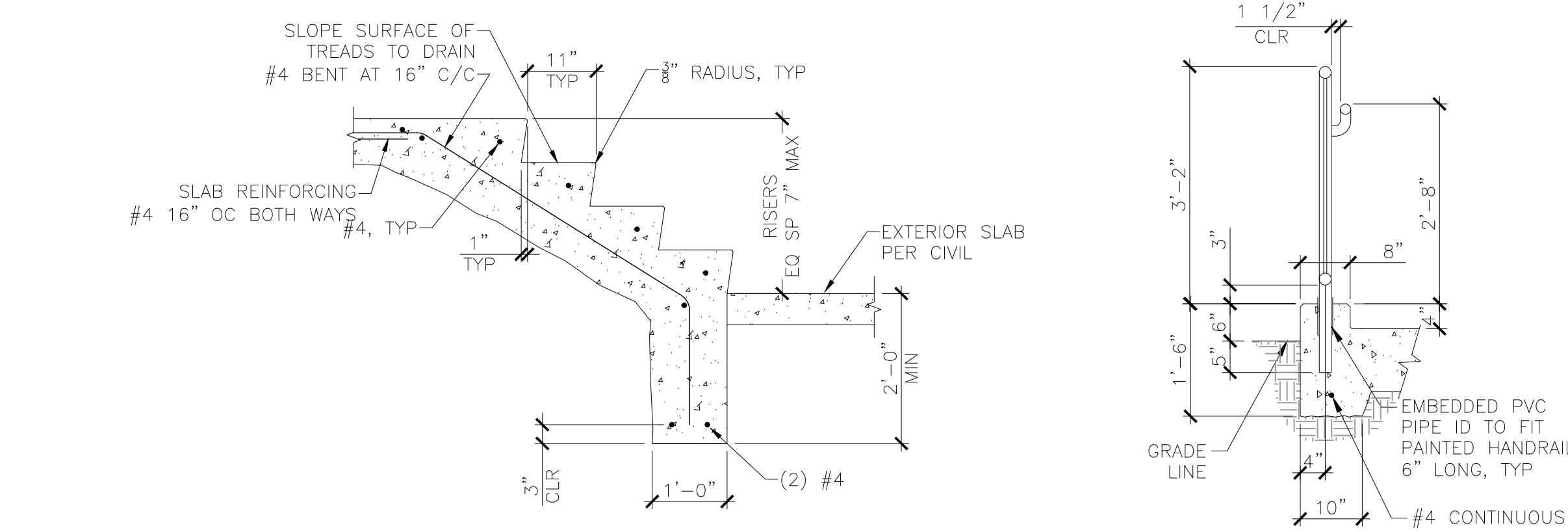
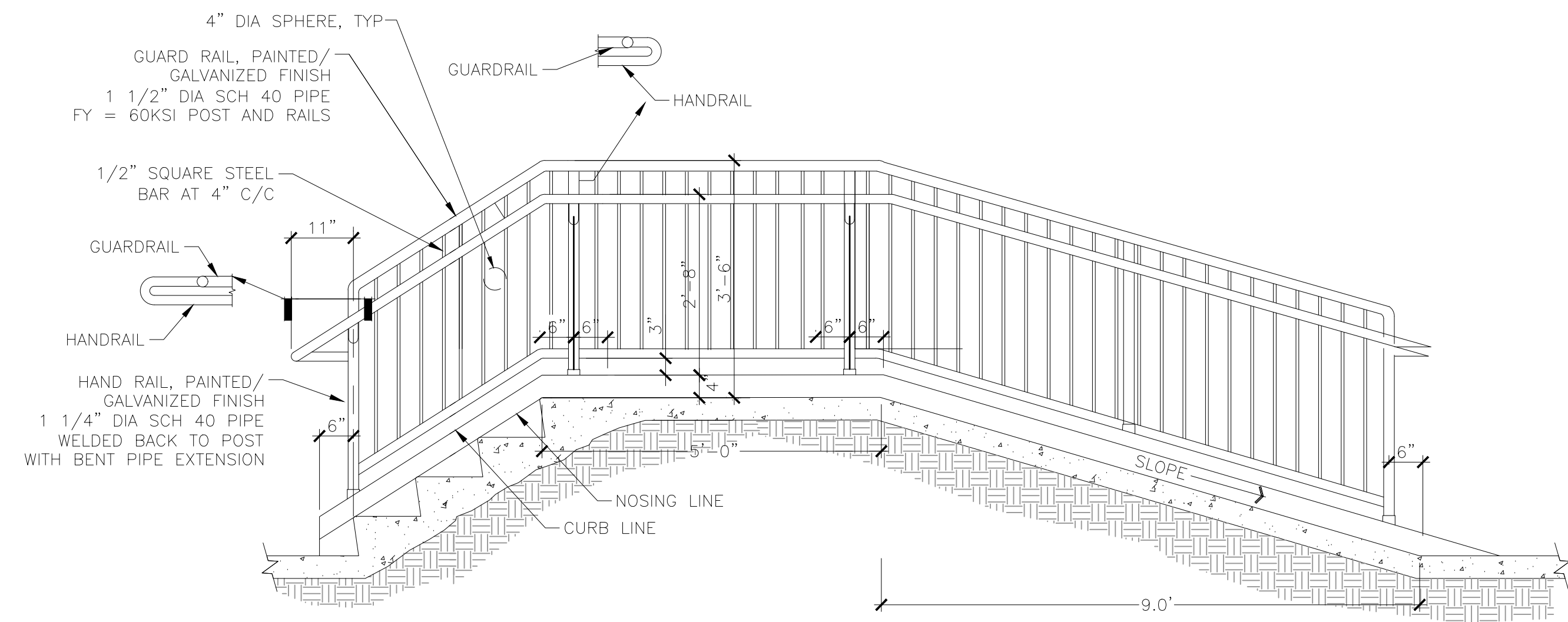


City of White Salmon
Public Works Department
PO BOX 2139
142 E. Jewett Blvd.
White Salmon, WA
98672 509-493-1133

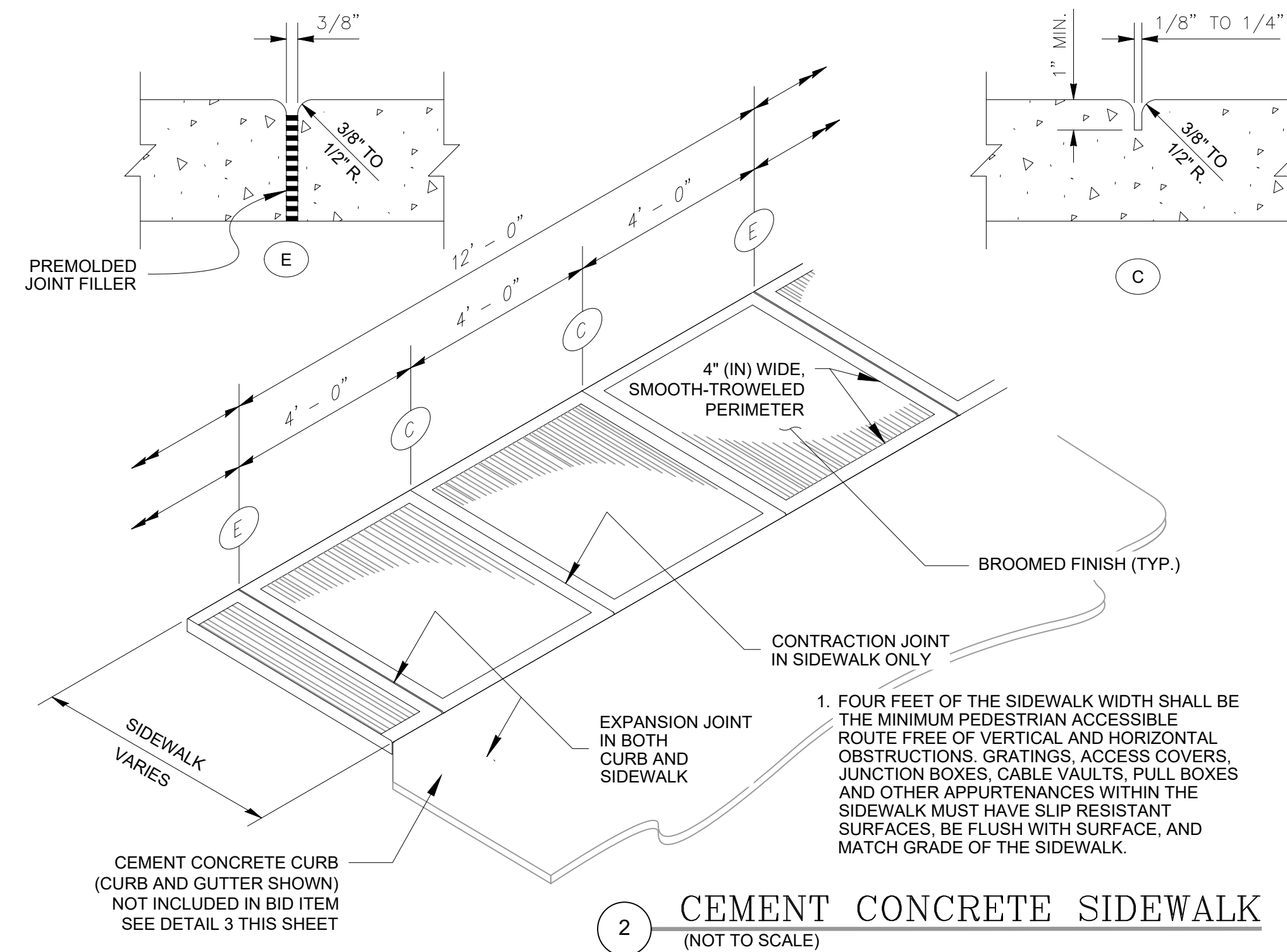
No.	Date	Revisions
1.0	10-8-19	SUBMITTED FOR REVIEW

SHEET NO.

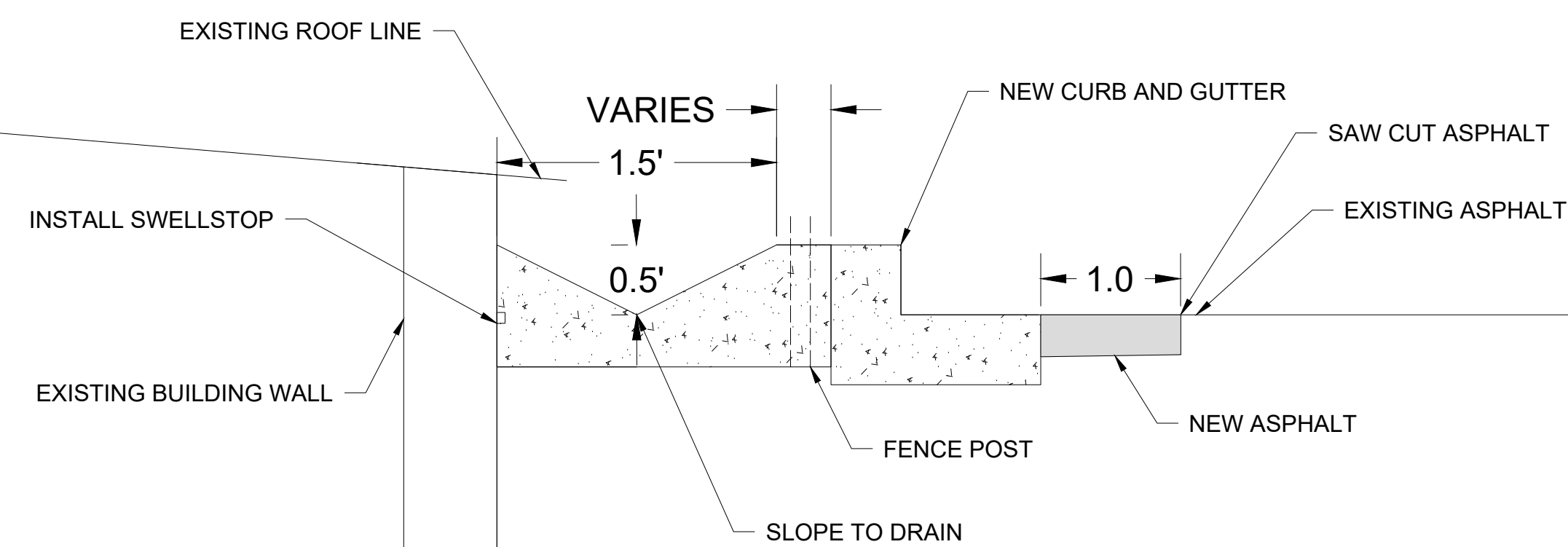
SCALE: AS NOTED
JOB NO. 19-701
REV. 0



1 ENTRY DETAILS
(NOT TO SCALE)



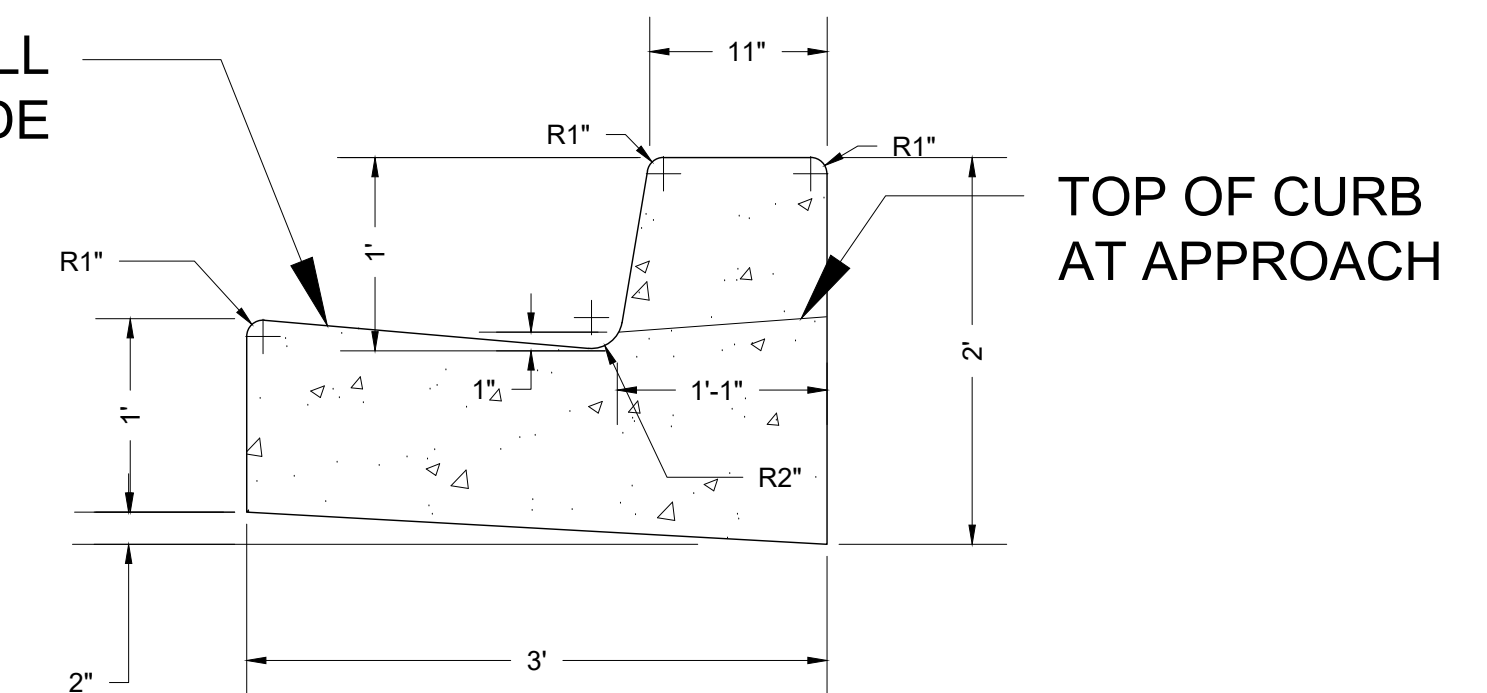
2 CEMENT CONCRETE SIDEWALK
(NOT TO SCALE)



4 CONCRETE DRAINAGE GUTTER
(NOT TO SCALE)

PAN HAS DOWNWARD SLOPE ON UPHILL (NORTH) SIDE

EXPANSION JOINTS @ 15' IN SIDEWALK AND CURB
CONSTRUCTION JOINTS @ 5' IN SIDEWALK AND CURB



4 CONCRETE CURB AND GUTTER
(NOT TO SCALE)

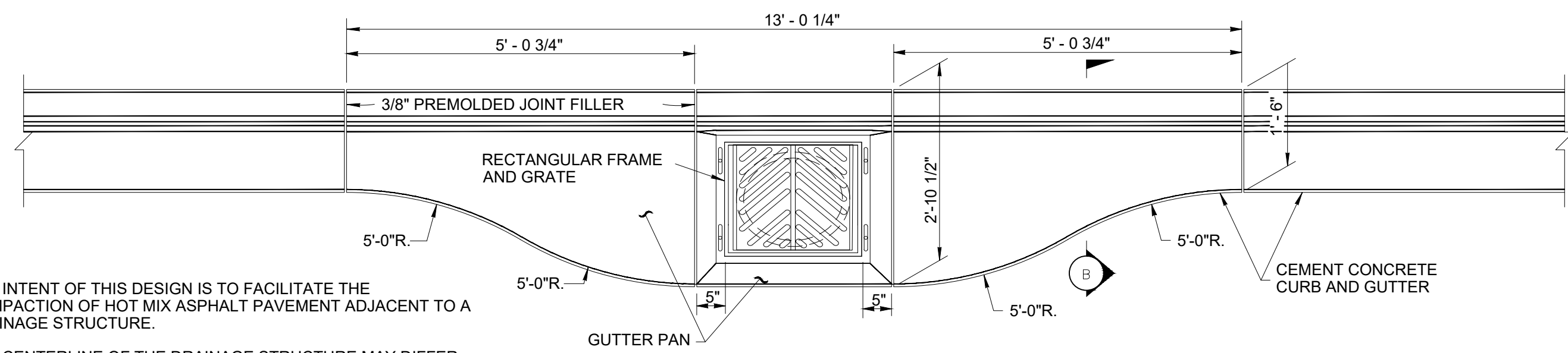
No.	Date	Revisions
1.0	10-8-19	SUBMITTED FOR REVIEW

SCALE: AS NOTED
JOB NO. REV.
19-701 0

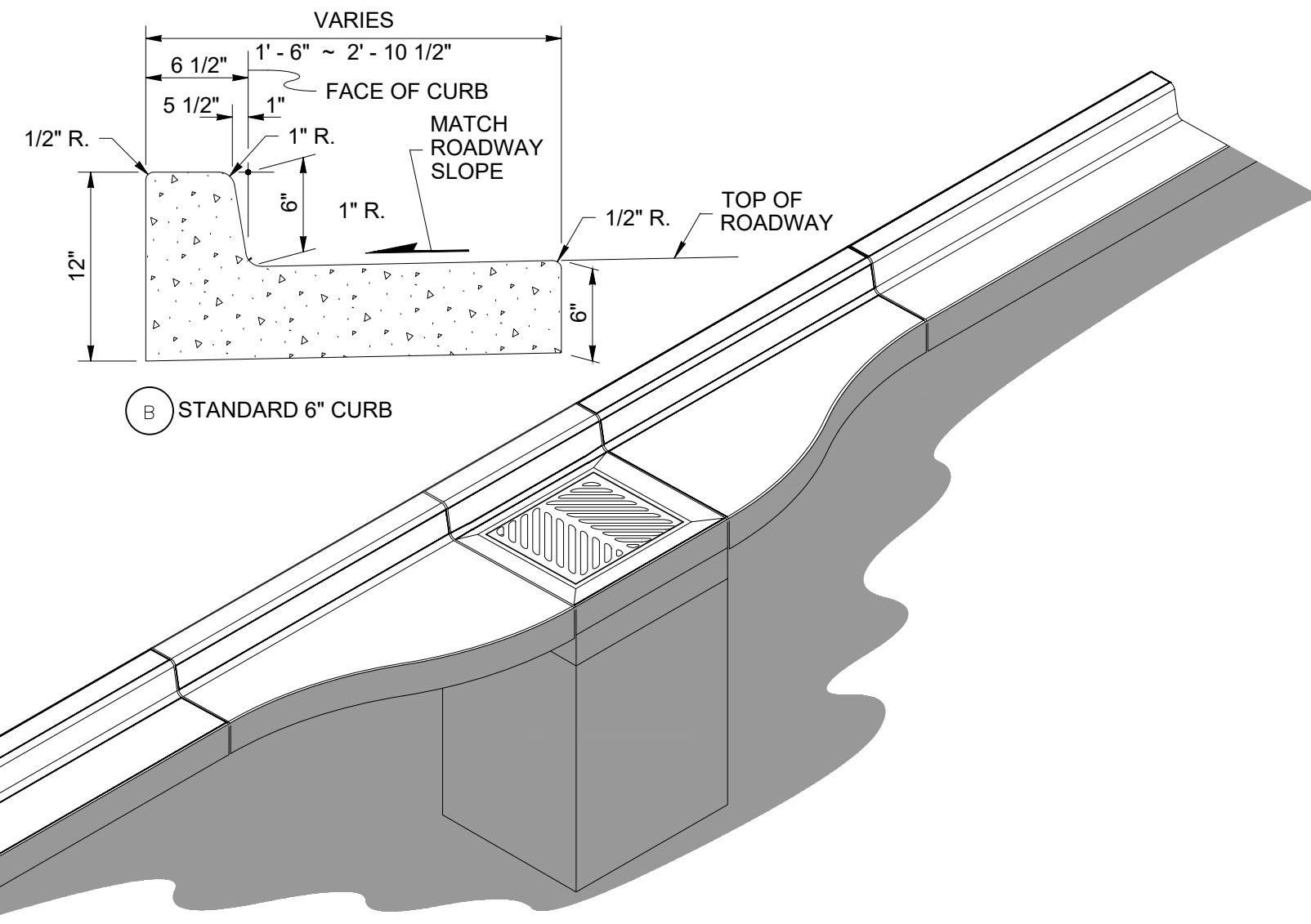
Pioneer Surveying & Engineering, Inc.
Civil/Structural Engineering and Land Planning
125 E. Simcoe Drive
Goldendale, Washington 98620
Phone (509) 773-4945, Fax (509) 773-5888, E-Mail pse@gorge.net



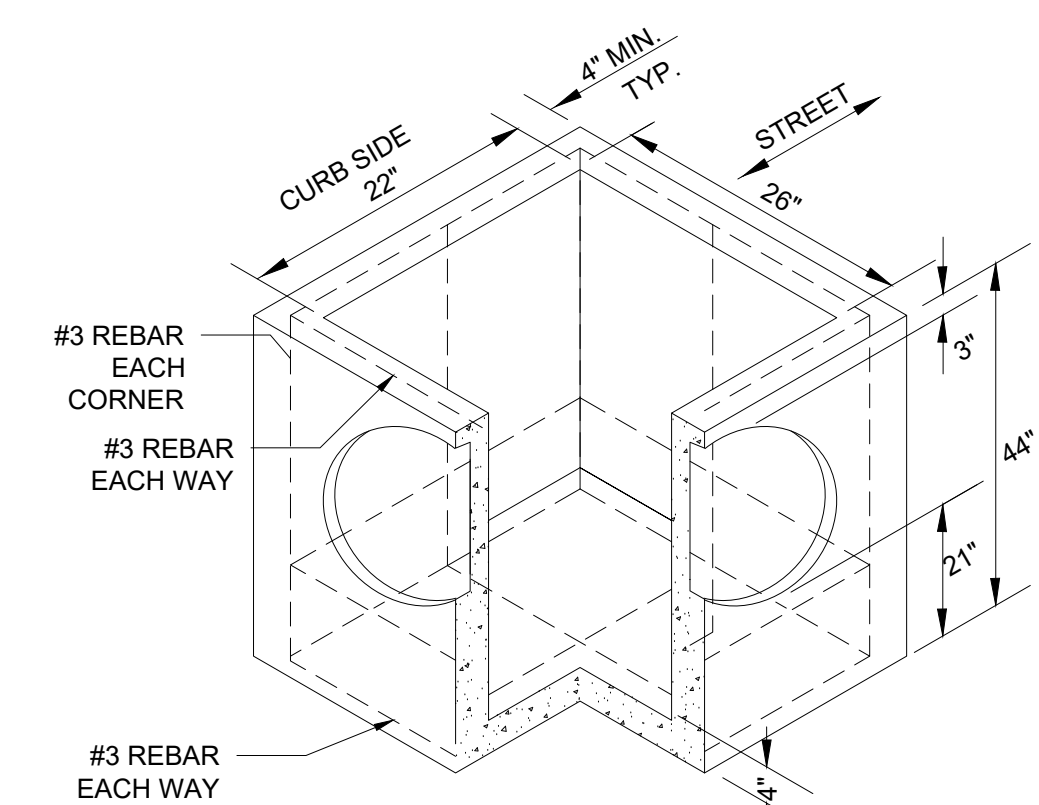
City of White Salmon
Public Works Department
PO BOX 2139
142 E. Jewett Blvd.
White Salmon, WA 98672
509-493-1133



1. THE INTENT OF THIS DESIGN IS TO FACILITATE THE COMPACTION OF HOT MIX ASPHALT PAVEMENT ADJACENT TO A DRAINAGE STRUCTURE.
2. THE CENTERLINE OF THE DRAINAGE STRUCTURE MAY DIFFER FROM THE CENTERLINE OF THE FRAME AND GRATE.

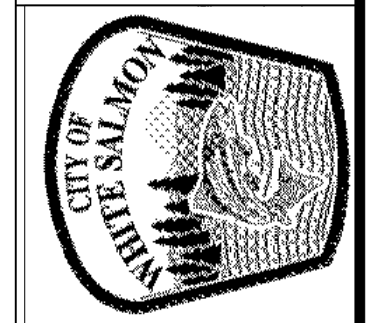
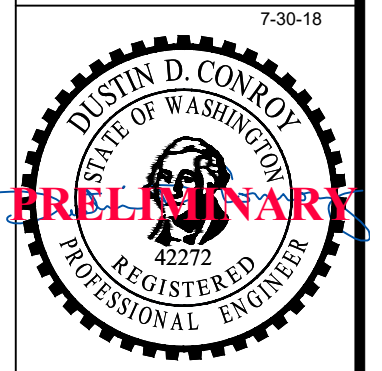


1 STANDARD CURB GUTTER WIDENING DETAIL
(NOT TO SCALE) NE CORNER BROADWAY AND KING



3 PRECAST BASE SECTION
(MAX. HOLE SIZE 20")
CONCRETE CATCH BASIN
(NOT TO SCALE)

Pioneer Surveying & Engineering, Inc.
Civil/Structural Engineering and Land Planning
125 E. Simcoe Drive
Goldendale, Washington 98620
Phone (509) 773-4945, Fax (509) 773-5888, E-Mail pse@gorge.net

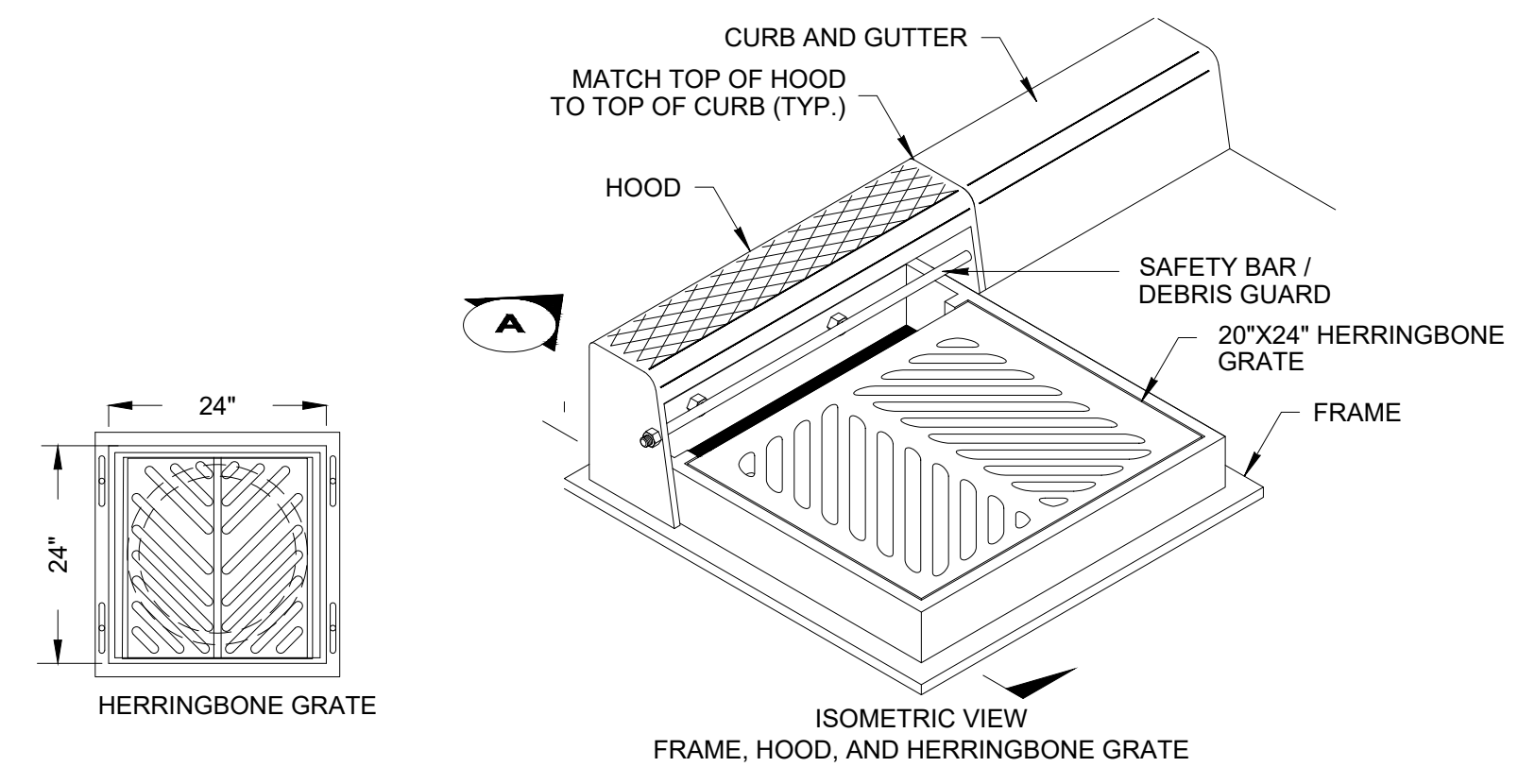


City of White Salmon
Public Works Department
PO BOX 2159
142 E. Jewett Blvd.
White Salmon, OR
98672 509-493-1133

No.	Date	Revisions

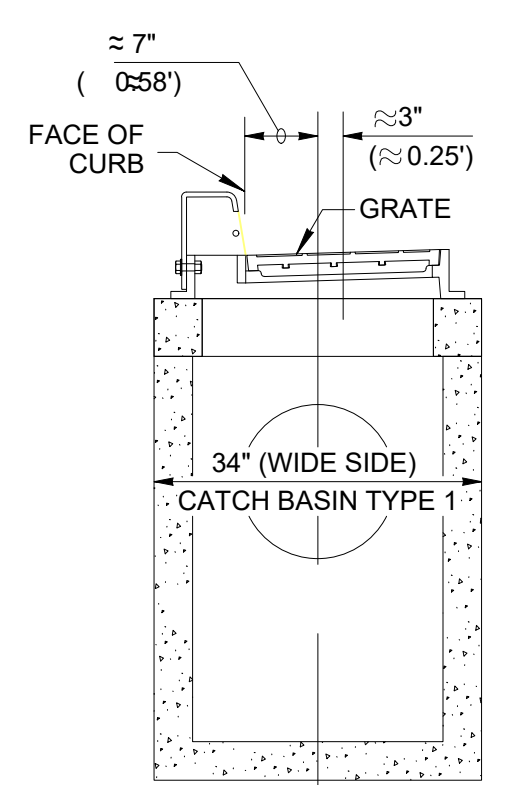
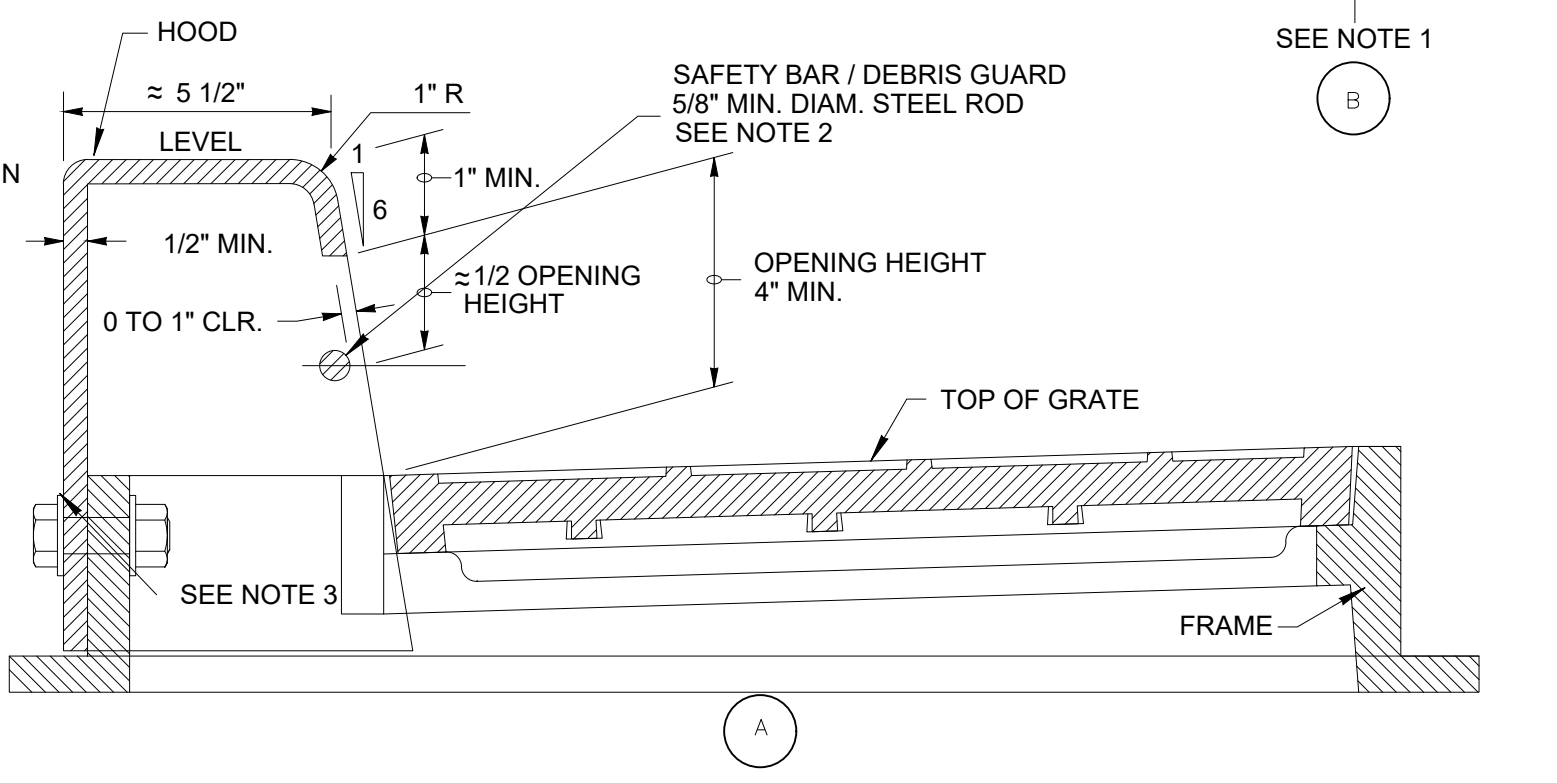
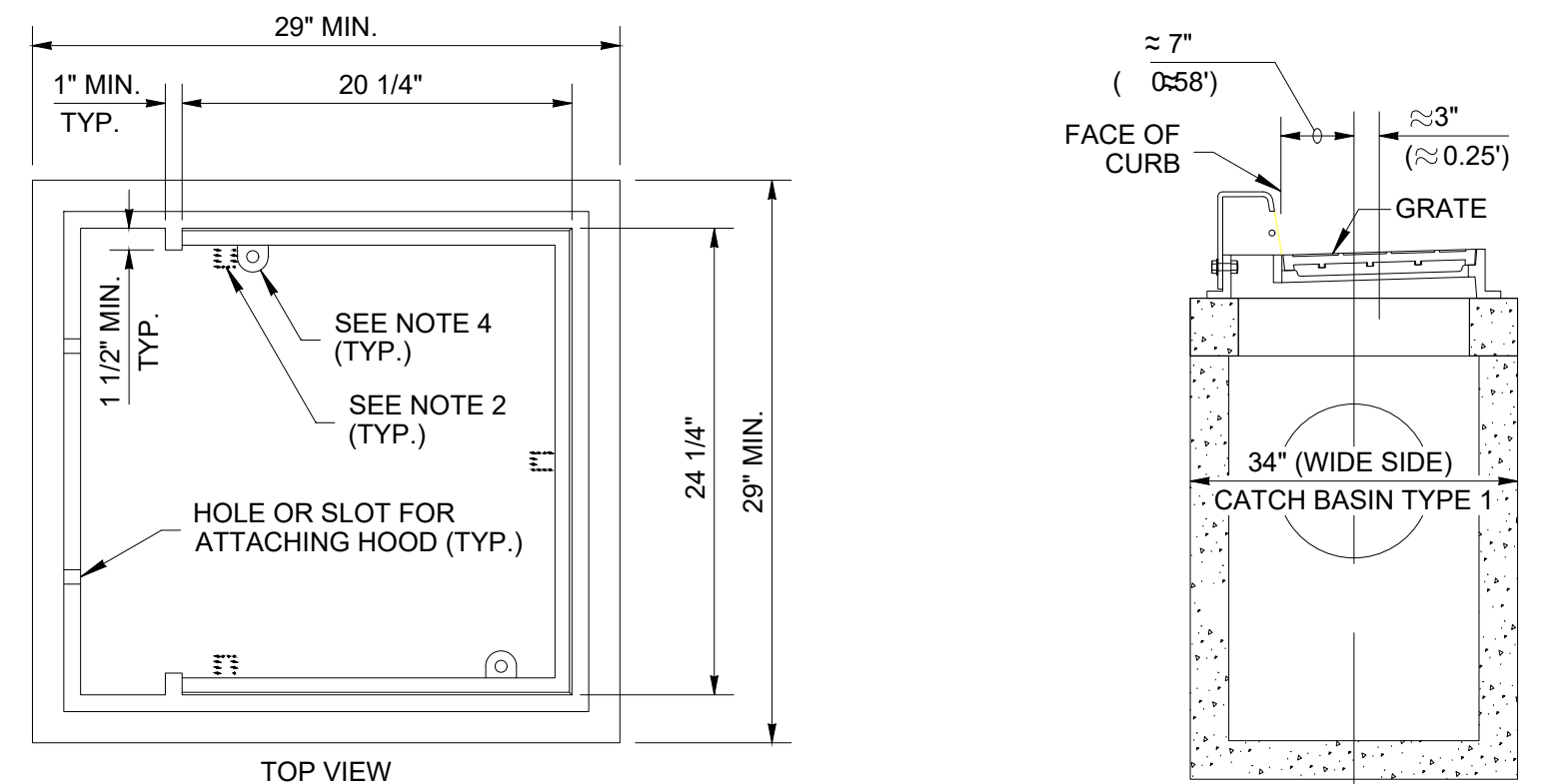
1.0	10-8-19	SUBMITTED FOR REVIEW
-----	---------	----------------------

SCALE: AS NOTED
JOB NO. REV.
19-701 0



1. THE ASYMMETRY OF THE COMBINATION INLET SHALL BE CONSIDERED WHEN CALCULATING THE OFFSET DISTANCE FOR THE CATCH BASIN. SEE SECTION A.
2. THE DIMENSIONS OF THE FRAME AND HOOD MAY VARY SLIGHTLY AMONG DIFFERENT MANUFACTURERS. THE FRAME MAY HAVE CAST FEATURES INTENDED TO SUPPORT A GRATE GUARD. HOOD UNITS SHALL MOUNT OUTSIDE OF THE FRAME. THE METHODS FOR FASTENING IN THE SAFETY BAR / DEBRIS GUARD ROD TO THE HOOD MAY VARY. THE HOOD MAY INCLUDE CASTING LUGS. THE TOP OF THE HOOD MAY BE CAST WITH A PATTERN.
3. ATTACH THE HOOD TO THE FRAME WITH TWO 3/4" x 2" HEX HEAD BOLTS, NUTS, AND OVER SIZE WASHERS. THE WASHERS SHALL HAVE DIAMETER ADEQUATE TO ASSURE FULL BEARING ACROSS THE SLOTS.
4. WHEN BOLT-DOWN GRATES ARE SPECIFIED IN THE CONTRACT, PROVIDE TWO HOLES IN THE FRAME THAT ARE VERTICALLY ALIGNED WITH THE GRATE SLOTS. TAP EACH HOLE TO ACCEPT A 5/8" x 11 NC x 2" ALLEN HEAD CAP SCREW. LOCATION OF BOLT-DOWN HOLES VARIES AMONG DIFFERENT MANUFACTURERS. SEE BOLT DOWN DETAIL, STANDARD PLANS B-30.10.
5. ONLY DUCTILE IRON GRATES SHALL BE USED. SEE STANDARD PLANS B-30.30 AND B-30.40 FOR GRATE DETAILS. REFER TO STANDARD SPECIFICATION 9-05.15(2) FOR ADDITIONAL REQUIREMENTS.
6. THIS PLAN IS INTENDED TO SHOW THE INSTALLATION DETAILS OF A MANUFACTURED PRODUCT. IT IS NOT THE INTENT OF THIS PLAN TO SHOW THE SPECIFIC DETAILS NECESSARY TO FABRICATE THE CASTINGS SHOWN ON THIS DRAWING.
7. DIAGONAL GRATE SHALL BE USED IN ROLLED CURB SECTIONS. HERRINGBONE GRATE SHALL BE USED ON THE FLAT GRATE.
8. EITHER COMBINATION INLETS OR NYLOPLAST CATCH BASINS MAY BE USED IN STREET AREAS. ONCE CHOSEN ONLY ONE TYPE SHALL BE USED.

2 COMBINATION INLET
(NOT TO SCALE)



A

B