

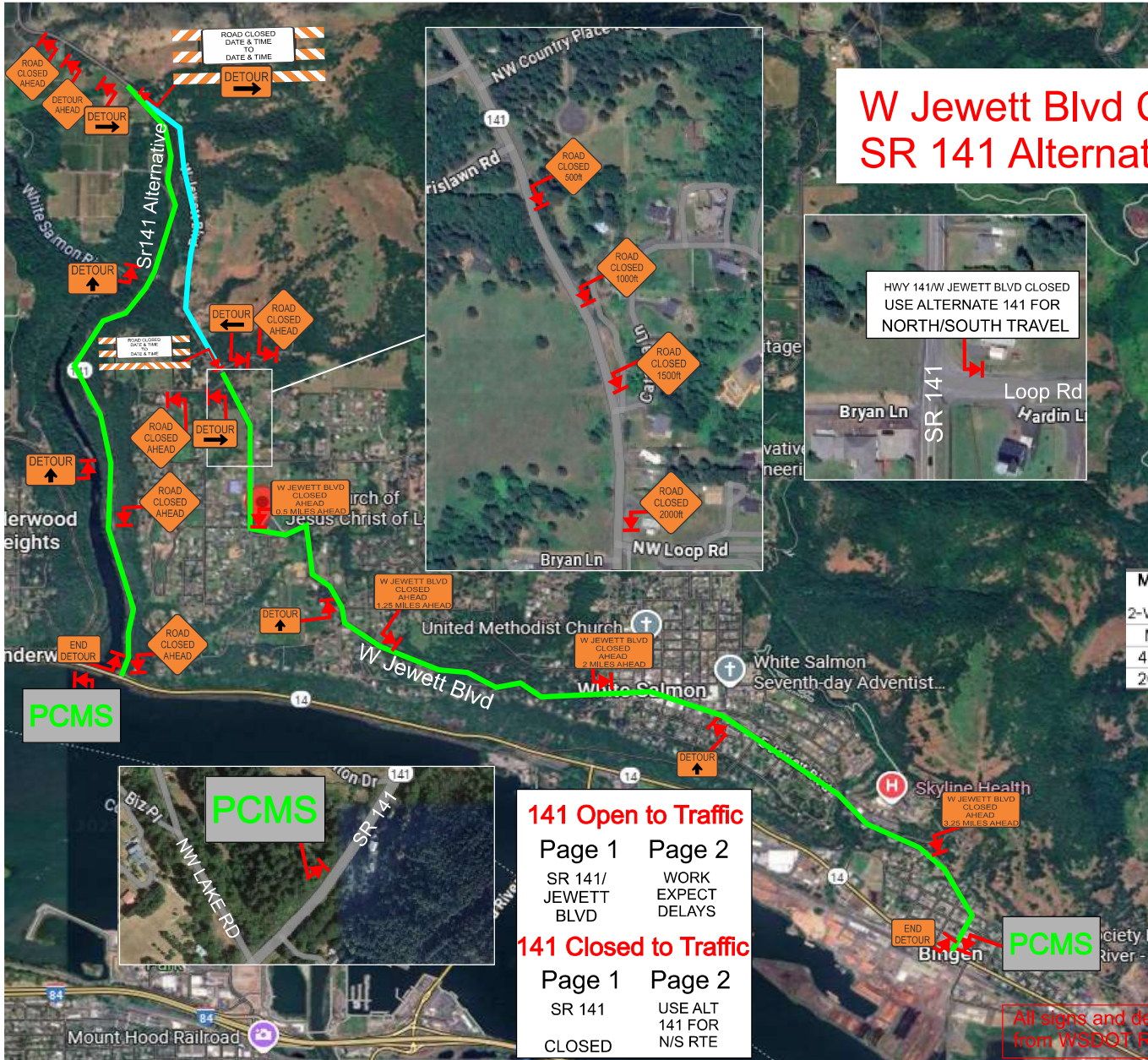
W Jewett Blvd Closure with SR 141 Alternative Detour



█ = ROAD CLOSED
█ = DETOUR

MAXIMUM CHANNELIZING DEVICE SPACING
2-Way, 1-Lane Alternating Traffic

MPH	TAPER	TANGENT
45-65	10'-20'	80'
20-40	10'-20'	40'



141 Open to Traffic

Page 1	Page 2
SR 141/ JEWETT BLVD	WORK EXPECT DELAYS

141 Closed to Traffic

Page 1	Page 2
SR 141 CLOSED	USE ALT 141 FOR N/S RTE

PCMS-7 days prior to starting work board will have notice of road work/closure with start date noted

All signs and devices shall be removed from WSDOT RW when not applicable.