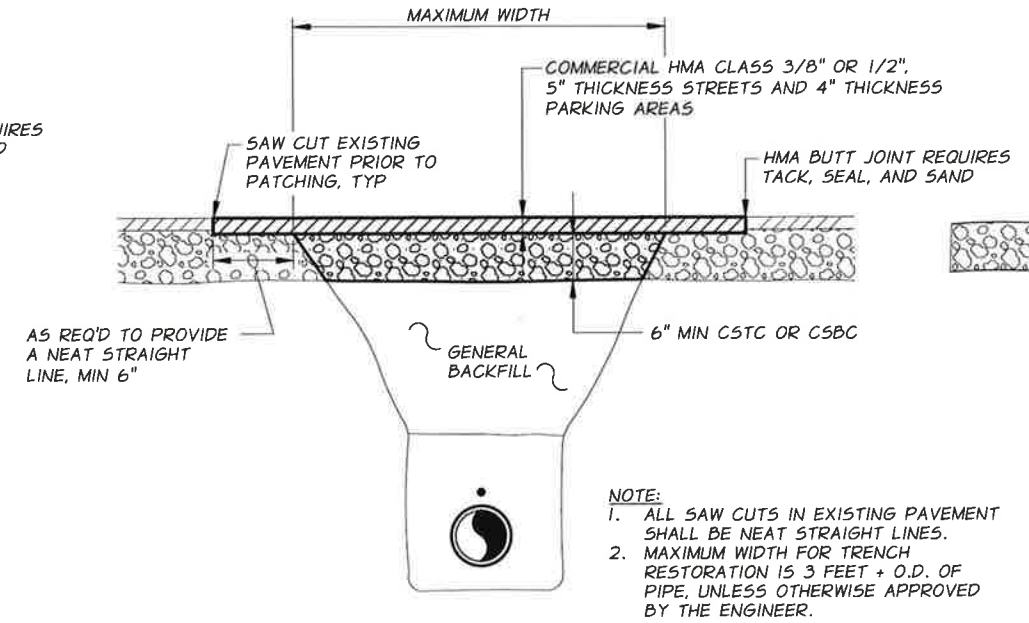
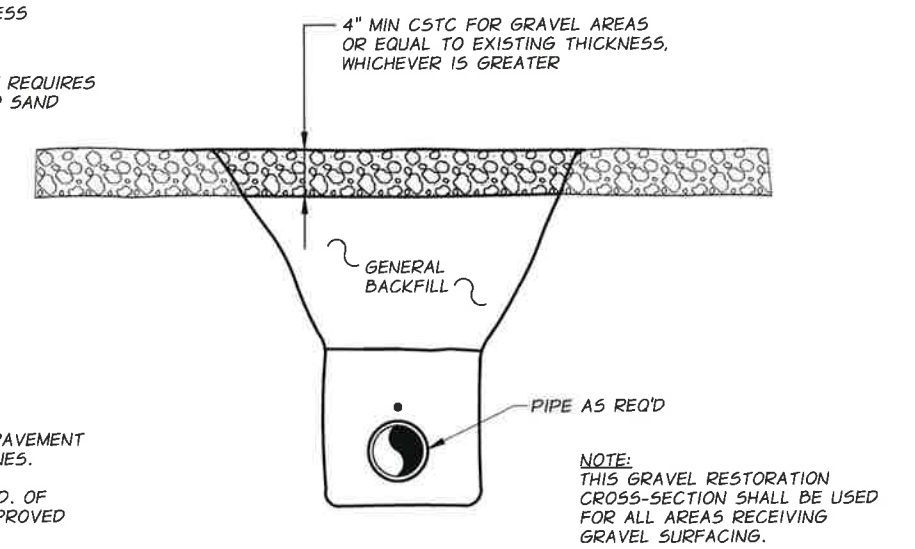


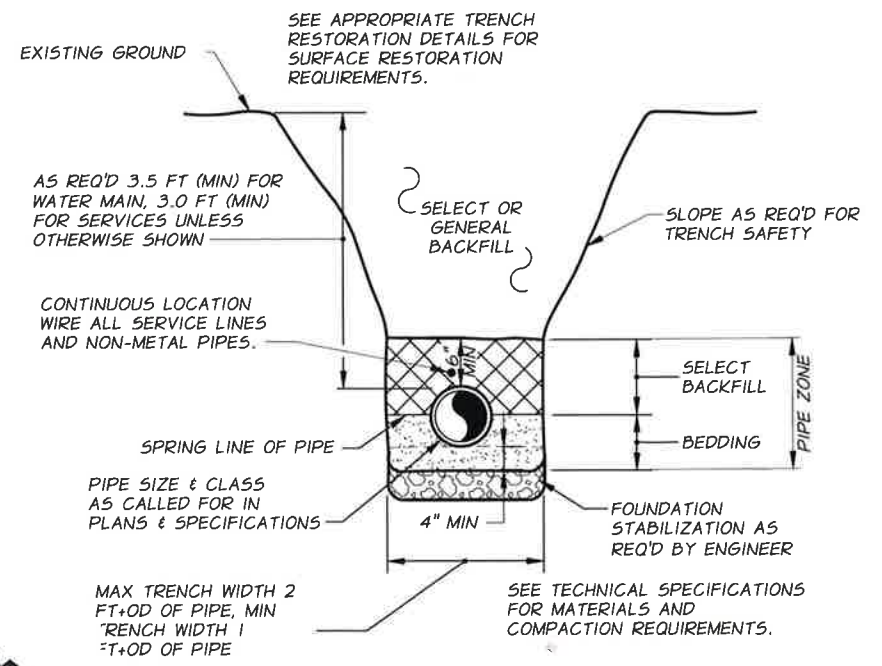
C1 SURFACE RESTORATION
PAVED AREAS - WSDOT ROW
NTS



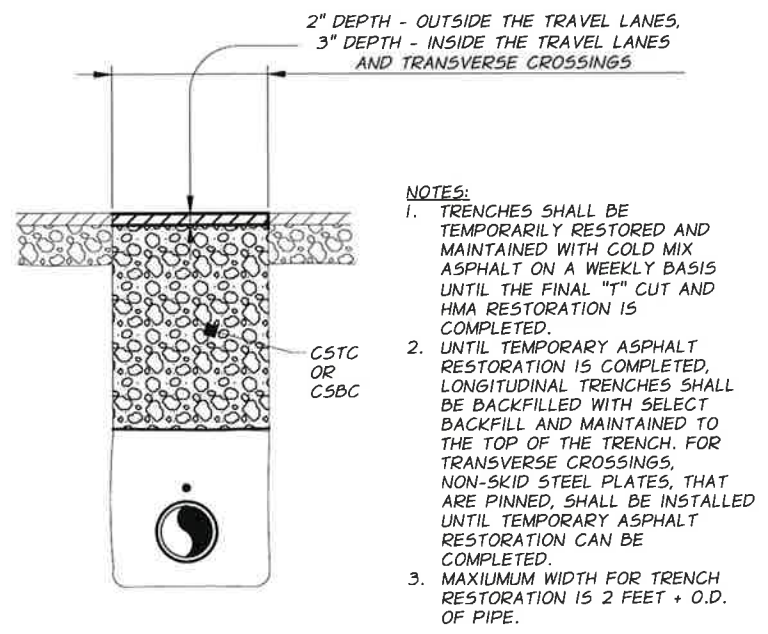
C3 SURFACE RESTORATION
PAVED AREAS - OUTSIDE WSDOT ROW
NTS



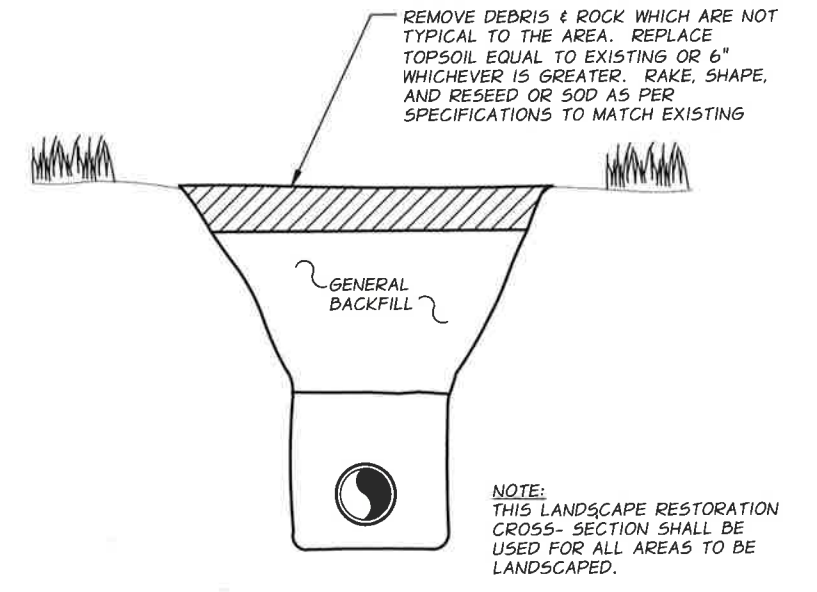
C5 SURFACE RESTORATION
GRAVEL AREAS
NTS



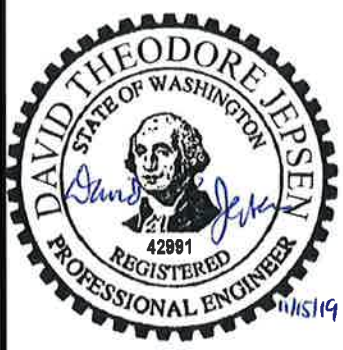
A1 TRENCH EXCAVATION AND BACKFILL
NTS



A3 TEMPORARY SURFACE RESTORATION
PAVED AREAS - WSDOT ROW / SKYLINE DRIVE / DOCK GRADE ROAD
NTS



A5 SURFACE RESTORATION
LAWNS & LANDSCAPED AREAS
NTS



REVISION	BY	DATE	JOB NUMBER	250-04	DATE	September 4, 2019
DESIGNED BY	D. JEPSEN		ACAD FILE	250-04-040-C-301.dwg		
DRAWN BY	J. CHAPMAN		COPYRIGHT 2019 BY ANDERSON PERRY & ASSOC., INC.			
REVIEWED BY						

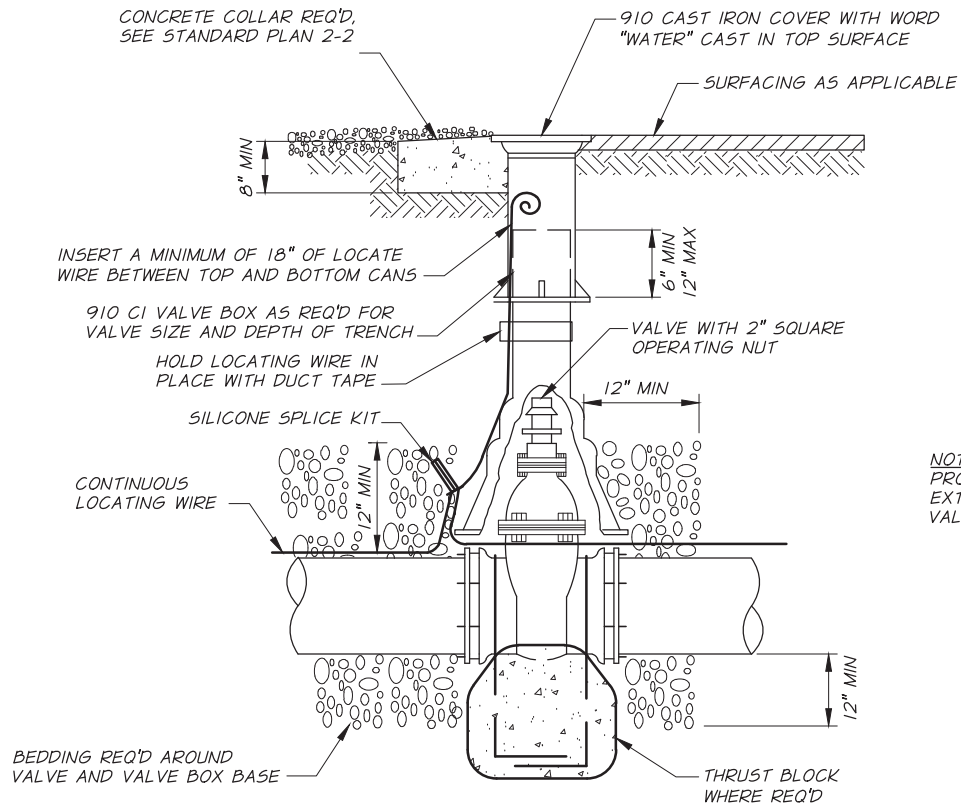


CITY OF WHITE SALMON
JEWETT WATER MAIN IMPROVEMENTS
2019
TRENCH SECTIONS BACKFILL & RESTORATION

SHEET
C-301
32 OF 63

R:\Clients\White Salmon\250-04 Jewett Water Main Improvements\DWG\250-04-040-C-301.dwg, 11/15/2019 10:09:50 AM, AutoCAD PDF (General Documentation).pc3

X:\Clients\White Salmon WA\250-23 Utility Standards Drafting\CAD\010 Standard Plans\3-5 Valve Stem Extension.dwg, 8/23/2022 9:28:33 AM



NOTE:
PROVIDE WATER VALVE STEM
EXTENSION WHEN DEPTH TO
VALVE NUT EXCEEDS 4.5 FT.

CITY OF
WHITE SALMON

VALVE BOX
NTS

STANDARD
PLAN

2-7

PAGE 1-1

AUGUST 2022
REVISION DATE