



## City Snow Plow Policy

*City of White Salmon Resident:*

*This information sheet is designed to provide a comprehensive overview of the City's snow removal procedures.*

### Snow Plowing Responsibilities

#### Who will be handling the plowing?

- The City's Public Works team is responsible for plowing the city streets as per our policy.
- The Washington State Department of Transportation (WSDOT) will handle plowing on State Route 14 and Highway 141.
- In the downtown area, the plowing of Highway 141 will be a collaborative effort between the City and WSDOT.
- For private alleys, driveways, fire hydrants, lanes, and sidewalks, we kindly request property owners and tenants to assume responsibility. This is necessary to avoid potential damage to private property.

### Snow Accumulation and Plowing Schedule

#### When does the plowing commence?

- Our plowing operations kick off when there is an accumulation of 3 inches of snow, with each situation being evaluated on a case-by-case basis.

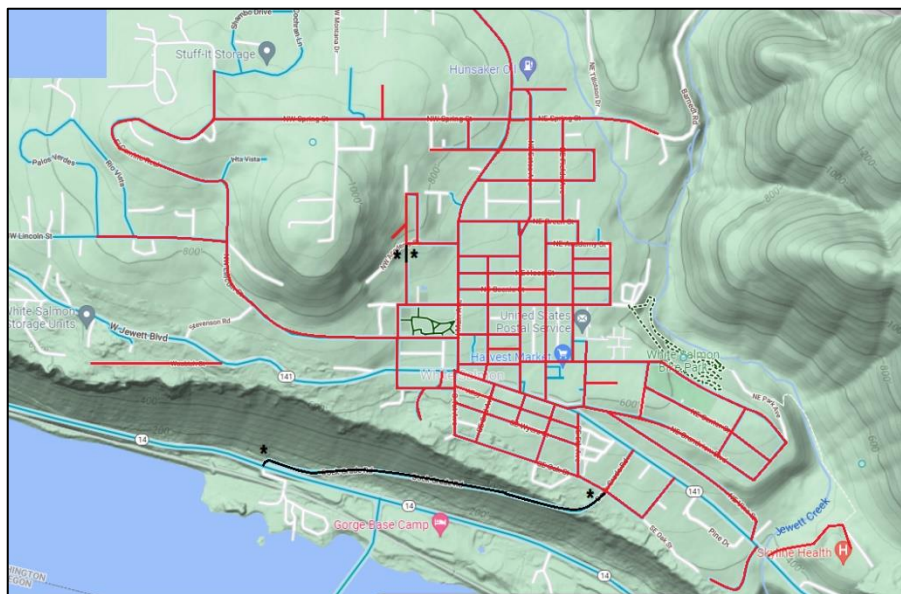
#### What is the plowing schedule for city streets?

- To understand snow removal on city streets, please refer to the color-coded map or the snow removal plan table.
- Our general working hours for snow removal are from 6:00 AM to 9:00 PM, with flexibility for special emergency conditions.

### Proper Snow Piling Locations

#### Where should snow be piled?

- We request that you pile snow in your yard area and avoid placing it near the curb or pushing it onto the street.



### SNOW PLOW MAP

**City Streets (Red)**

**Closed Roads (Black)**

*\*Dock Grade Rd*

*\*Portion of Michigan Ave*

**Non-Plowed Streets  
(White/Light Blue)**

DISCLAIMER: This product was prepared by The City of White Salmon and is for informational purposes only. It may not have been prepared for, or be suitable for legal, engineering, or surveying purposes. Users of this information should review or consult the primary data and information source to ascertain the usability of the information.

*Please note that our City crew makes every effort to plow the streets without pushing snow onto sidewalks and driveway entrances. However, there may be occasions when this is unavoidable. We apologize for any inconvenience this may cause.*

