

White Salmon

COMPREHENSIVE PLAN VISION



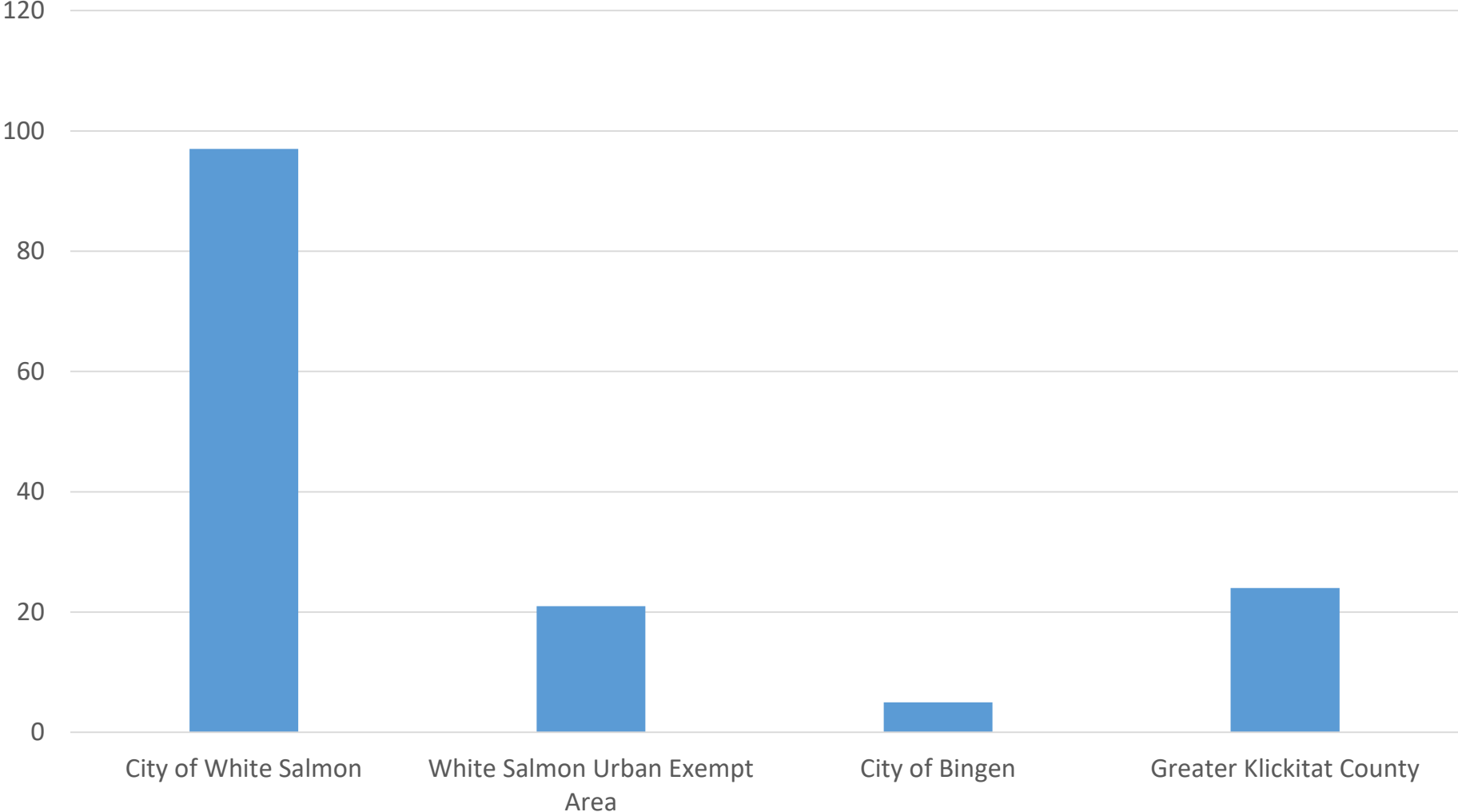
Community Conversations

- Farmers Market, Movies in the Park, Rotary, Everybodys, Senior Center, etc.
- More than 350 unique comments

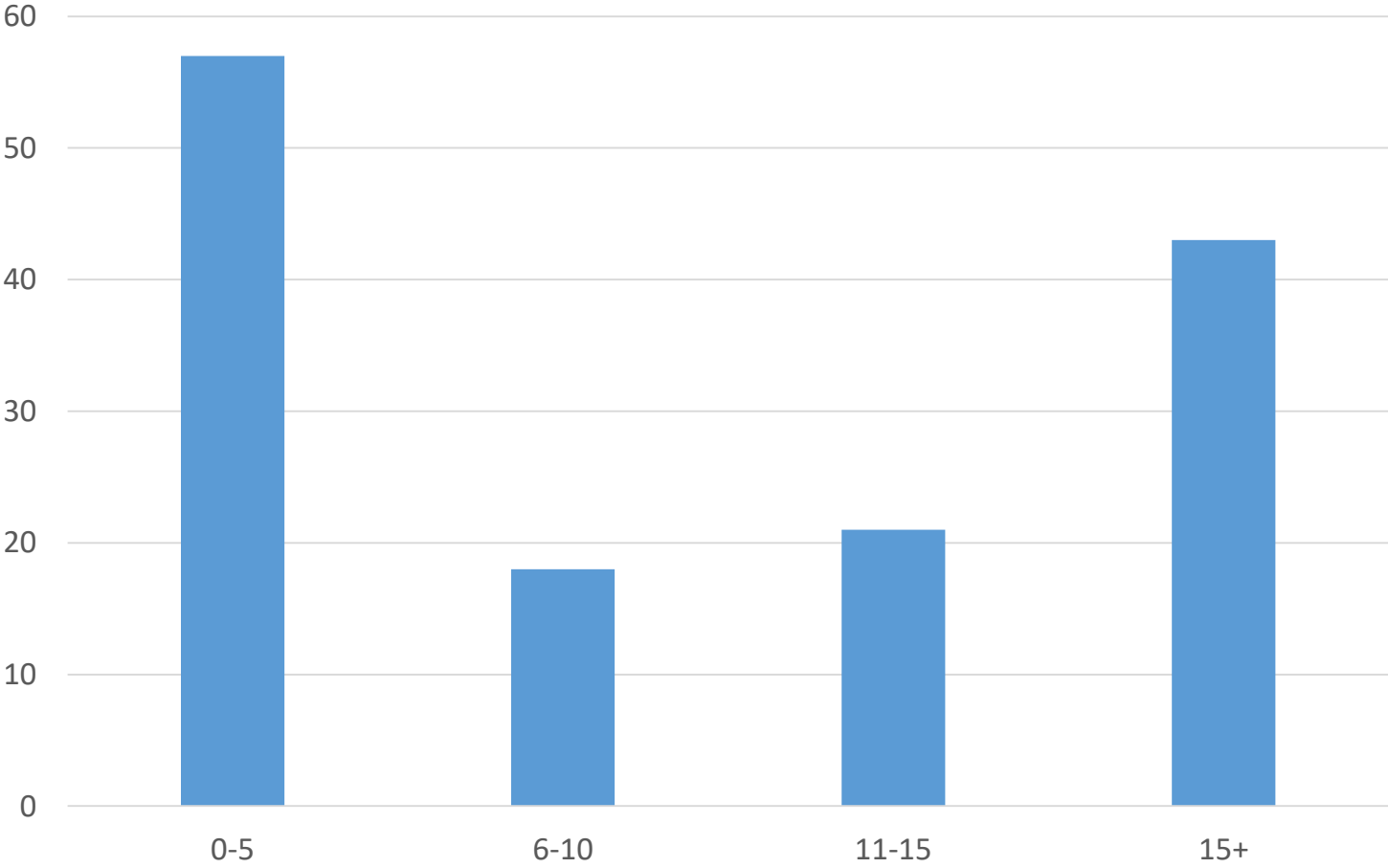
Community Survey

- **159** respondents

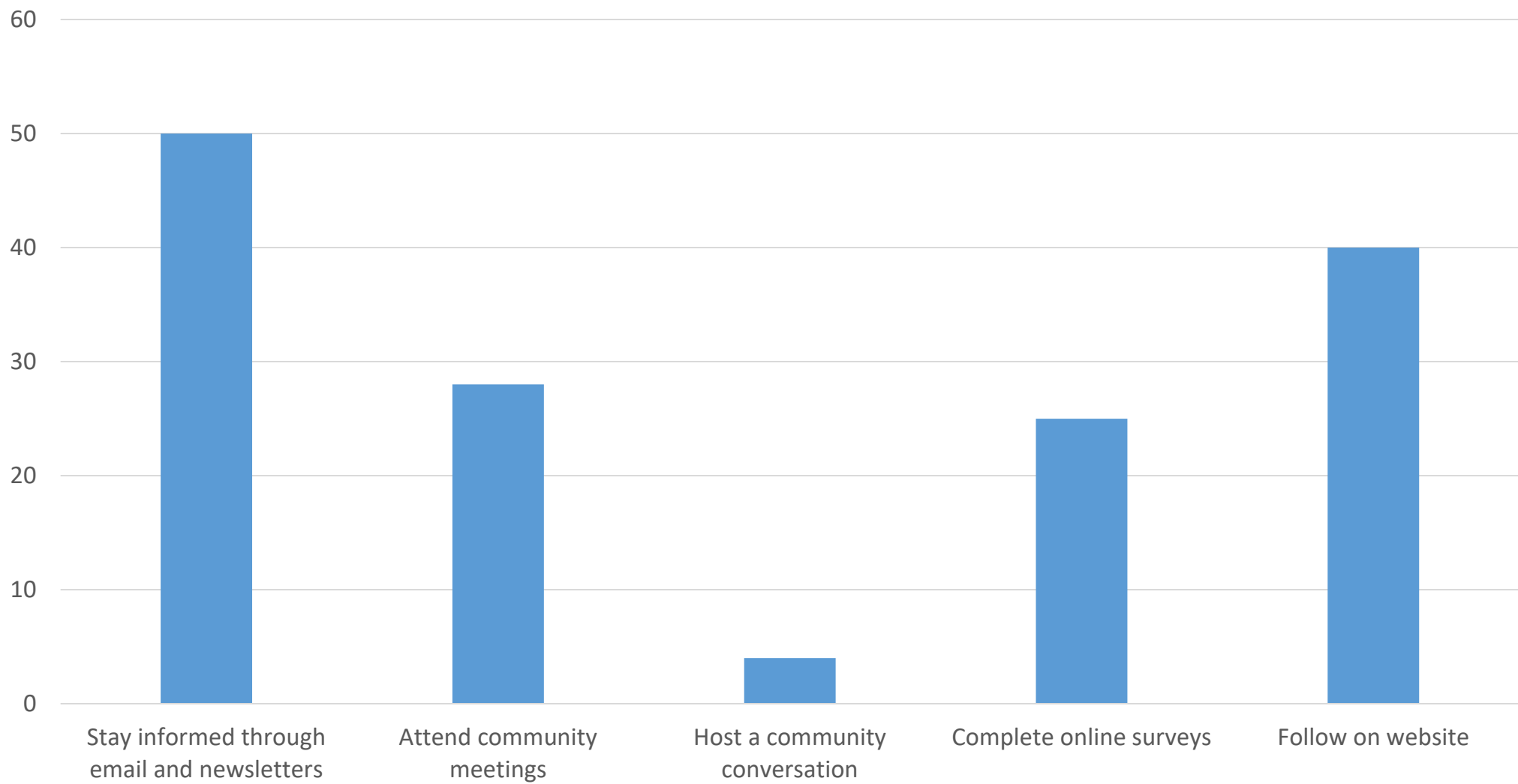
Where do respondents live?



How many years have respondents lived in White Salmon?



How do respondents want to be involved?



What do you love about White Salmon?

Sidewalks / paths

Sense of
community

Music in the Park

Water / outdoor
activities

Biking / bike paths

Housing stock

Library

Parks /
greenspace

Farmers market

Schools

Trails / Jewett
Creek

Small town

Walkable

Beauty / views

Friendly

Pool / splash pad

Less
Frequent



Most
Frequent

What makes White Salmon special? What do you want to protect or enhance?

Neighborhoods	Parks, public spaces	Small geographic size	Small town character
Location / access to Portland	Small streets (less traffic)	Community, culture, people	Natural beauty / views
Small businesses	Housing stock (mixed-use, multifamily, density)	Vibrant downtown	Access to nature and recreation
Public services (Library)			
Trails / Jewett Creek			
Trees			
Authentic, not touristy			



What would you like to change or improve in White Salmon for the future?

<p>Sewer / water infrastructure</p> <p>Shared City / County approach to growth</p> <p>Inclusivity, community</p> <p>Improve schools to prepare for growth</p> <p>Improve ball fields, parks</p>	<p>Smart downtown development</p> <p>Shared amenities (parking)</p> <p>Pool, community center</p> <p>Focus on long-term rentals</p> <p>New, mixed-use neighborhoods</p>	<p>Walking, biking</p> <p>Connected park system</p> <p>Amenities for youth and seniors</p>	<p>Variety of housing types (affordable, senior)</p> <p>Improve road maintenance</p>
---	---	--	--

Less Frequent



Most Frequent

What actions should the City take to achieve your vision for White Salmon?

<p>Community, arts, culture</p> <p>Parking</p> <p>Fill gaps in downtown, fix city hall</p> <p>No large homes</p>	<p>Continue White Salmon “feel” in new urban areas</p> <p>Affordable housing, long-term rentals</p> <p>Slow growth, rural, large lots</p> <p>Parks, community spaces, pool</p> <p>Protect trees, views and environment</p>	<p>Small-scale, local-serving businesses (entertainment, food)</p> <p>Right-sized infrastructure</p> <p>Zoning amendments (manage growth, home occupations, inclusionary, mixed-use development no small lots)</p>	<p>Small streets, pedestrian paths</p>
--	--	--	--

Less Frequent



Most Frequent

Is there anything else you would like to share about the future of White Salmon?

<p>More shopping, entertainment, dining</p> <p>School improvements</p>	<p>Community, culture, arts</p> <p>Concern about traffic</p>	<p>Need affordable housing (smaller, denser, mixed-use)</p> <p>Slow growth; maintain low densities</p> <p>Manage growth; infrastructure planning</p>	<p>Maintain small town size and character</p>
--	--	--	---

Less Frequent



Most Frequent

- Small town size and character
- Value natural beauty, trees and views
- Managed growth through right-sized infrastructure (small streets and pedestrian paths)
- A variety of housing types for ownership and long-term rental
- Connected park and trail system and access to recreation
- Opportunities to build community, foster culture and arts
- Vibrant downtown with local-serving businesses
- Maintain small town character in new urban areas

In 2040, White Salmon is a small community, both in size and character. The Columbia River Gorge provides scenic views, an abundance of recreational opportunities, and natural geographic boundaries. Small streets and pedestrian paths allow residents to walk to a variety of destinations, interact regularly with neighbors and support local businesses. The City is intentional about modest growth that contributes to the community's quality and authenticity.

Housing + Land Use

The built environment in White Salmon is integrated with the beauty of its setting. Natural features are preserved and views of the Columbia River and Mt. Hood are central to the city's sense of place. Diverse, high quality, and attractive homes serve a range of ages, incomes and households. Thoughtful development provides a mix of uses that complement downtown and maintains the city's walkable character.

Transportation

The transportation system reflects the City's desire to develop at a human scale. Sidewalks, pedestrian paths and bike routes provide convenient connections to downtown and neighborhood destinations. A network of narrow and well-maintained roads safely accommodates all users. Public and private transportation options connect residents to regional destinations.

Facilities + Capital Improvement Plans

Quality public facilities, services, and utilities contribute to a high quality of life. White Salmon values planning for public facilities to ensure they are “right-sized” to manage growth responsibly. The library and schools play a central role in community gathering and learning and are well planned and maintained to accommodate current and future residents.

Parks and Recreation

White Salmon residents enjoy a variety of parks and green spaces from community gathering spaces ranging from Rhinegarten Memorial Park to the more natural, forested Gaddis Park. Trails, such as the Jewett Creek Trail, are a valuable amenity and provide access to nearby recreational opportunities such as mountain biking on Hospital Hill or kayaking the White Salmon River. Health and aesthetic benefits are derived from the ample tree canopy and view corridors to the Columbia River and Mt. Hood. Sports fields, a bike park, and a community pool and recreation center serve the community's recreation needs.