

Floodplains and Wetlands

- WETLAND TYPE**
- Freshwater Emergent Wetland
 - Freshwater Forested/Shrub Wetland
 - Freshwater Pond
 - Other
 - Riverine

- Cad Renderer**
- 200' Shoreline Buffer

- klickitat**
- Flood Zone**
- 100 Year Floodplain
 - 500 Year Floodplain
 - Water Bodies

Source: Washington Department of Ecology, FEMA Flood Data

Map Symbols

- White Salmon City Limits
- White Salmon Urban Area
- Parcel Lines
- Water Bodies
- Stream
- Roads
 - Bridge
 - City, County, Other Govt
 - Private
 - State
 - railroad

0 500 1,000 2,000 Feet

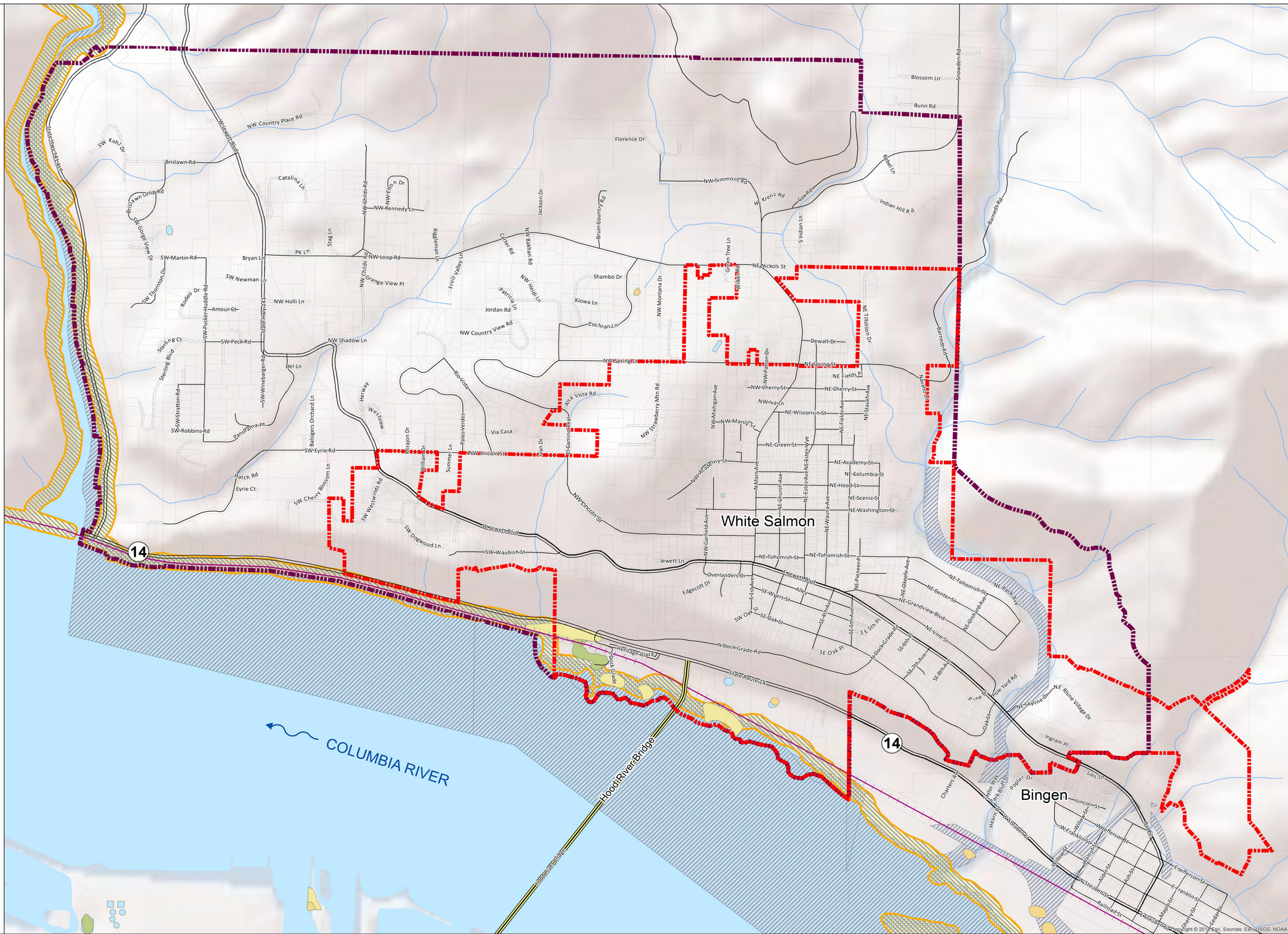


Figure 07: Floodplain and Potential Wetlands
White Salmon Shoreline Master Plan

DECEMBER 2014

