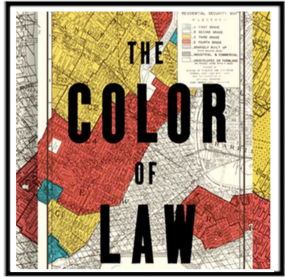


Listening Station 3: How can we make housing more diverse and equitable?



Remove exclusionary zoning



Permit outright uses (Not conditional use)



Allow more infill



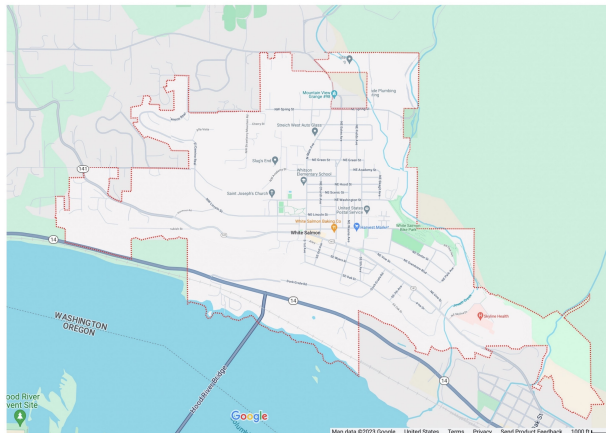
Provide renter protections



Allow mobile homes



Allow urban agriculture



White Salmon Zoning

- MPUD Multi Family Planned Unit Development Overlay
 - PUD Planned Unit Development Overlay
 - RL Single Family Large Lot Residential
 - R-1 Single Family Residential
 - R-2 Two-Family Residential
 - R-3 Multi-Family Residential
 - MHR Mobile Home Residential
 - C Commercial
 - RD Riverfront District
 - PU Public
- Digitized from City of White Salmon Zoning Map

Klickitat County Zoning

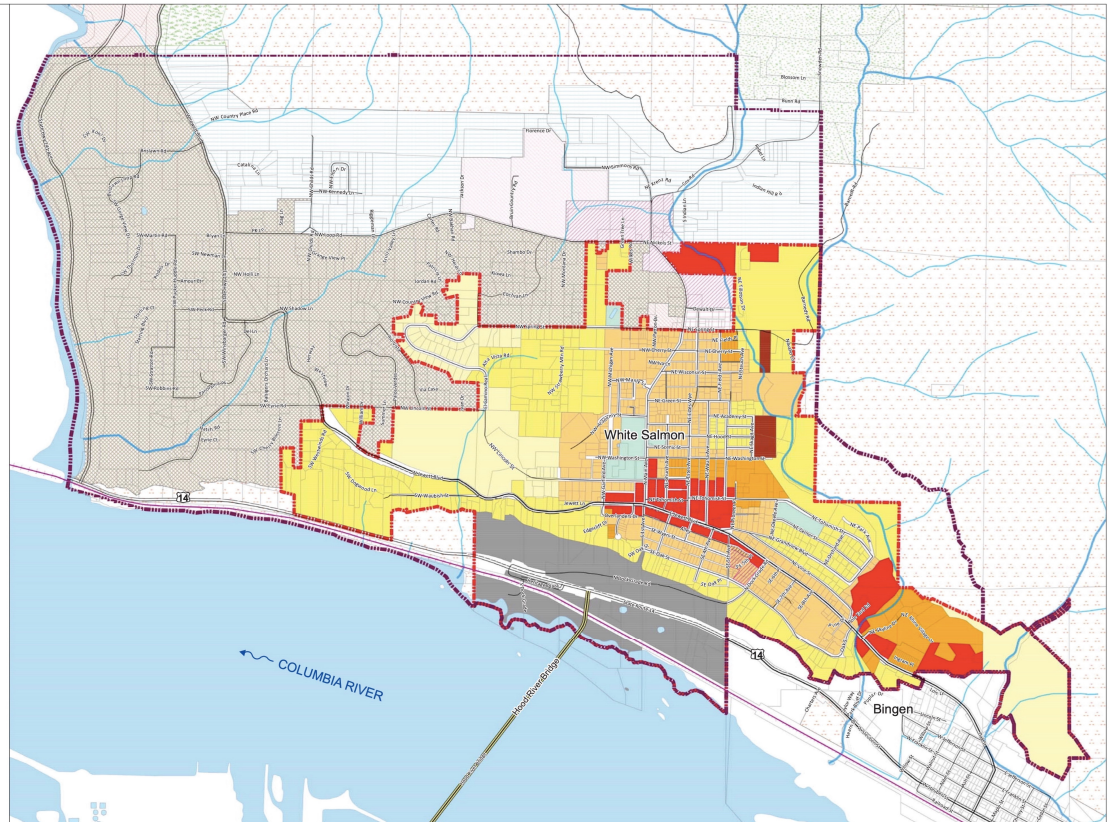
- Extensive Agriculture
- Forest Resource
- General Commercial
- General Rural
- Industrial Park
- Open Space
- Public
- Residential
- Resource Lands
- Rural Residential 1
- Rural Residential 2
- Suburban Residential

Source: Klickitat County GIS

Map Symbols

- White Salmon City Limits
- White Salmon Urban Area
- Parcel Lines
- Water Bodies
- Roads
 - Bridge
 - City, County, Other Govt
 - Private
 - State
 - railroad

0 500 1,000 2,000 Feet



White Salmon Zoning Map

Approval Date: 02 March 2016

