



# White Salmon Comprehensive Plan Update

# Introduction

- ▶ **Purpose:**

- Modernize the comprehensive plan
- Foundational vision
- Consistency between elements
- Updated data, context, and style

- ▶ **Why is the comprehensive plan important?**

- Provides direction on how the community will grow
- Provides policy direction for future development code updates



# Comprehensive Plan Organization

## Updated Plan (2021)

### Acknowledgments

1. White Salmon 2040
2. Land Use and Urbanization
3. Housing
4. Economic Development
5. Transportation
6. Parks and Recreation
7. Public Facilities and Services
8. History and Historic Places
9. Environmental Quality and Critical Areas
10. Capital Improvements

### Appendices

- A. Historic Resources
- B. Urbanization Study
- C. Parks and Recreation Plan
- D. Transportation Plan
- E. Capital Facilities/Improvement Plan
- F. Sewer Plan
- G. Water Plan

# Plan elements

- ▶ **Vision and Focus Area Statement for key elements**
- ▶ **Background**
  - Existing Conditions
  - Existing Plans and Regulations
- ▶ **Goals and Policies**

# Public Involvement

## ▶ Community Outreach/Events

- Community survey (159 responses received)
- Community conversations (350 comments)
  - *Farmers' market*
  - *Movies in the Park*
  - *Rotary Club*
  - *Klickitat County Senior Center*
  - *Everybody's Brewing*

## ▶ Planning Commission/City Council Meetings/Workshops

- 32 Planning Commission meetings/workshops
- City Council meetings/workshops

# 2040 Vision

Public involvement activities informed the creation of the vision. The vision helped drive the update of the comprehensive plan and provided a framework for the goals/policies of the elements contained in the plan.

**“In 2040, White Salmon is a thriving village bounded by mountains, rivers and the Columbia River Gorge National Scenic Area. We nurture innovation and diversity, creating opportunities and partnerships that foster a prosperous community. Our unique location affords residents and visitors a gateway to explore the surrounding natural beauty. The city offers small streets and pedestrian paths that allow residents to walk to a variety of destinations, interact regularly with neighbors, and support a vibrant downtown business district. Our quality of life is based on balanced and sustainable growth that contributes to the community’s authenticity and prosperity.”**



# Land Use and Urbanization Goals

- ▶ *Goal LU-1.* Establish and maintain a land use pattern that accommodates the current and future needs of the City and provides housing and employment choices that are cohesive with the community’s vision.
- ▶ *Goal LU-2.* Collaborate with Klickitat County on land use planning for the Urban Exempt Area, ensuring a common vision for development, orderly land division and infrastructure provision, and the ability to accommodate future residential and employment needs.
- ▶ *Goal LU-3.* Establish and maintain design and aesthetic standards for public places that preserve and enhance White Salmon’s “sense of place.”

# Land Use Designations

## Land Use Designation

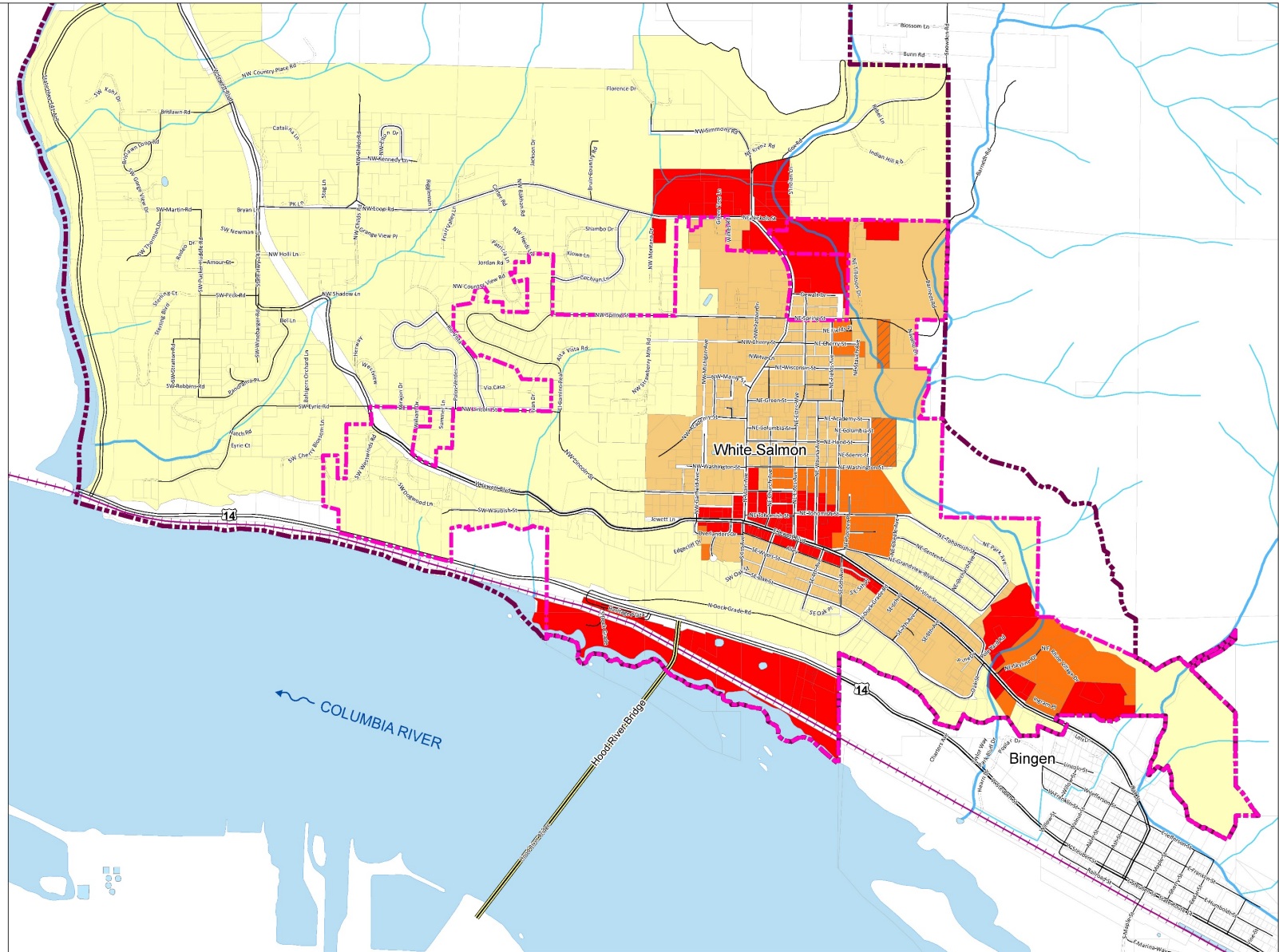
- Low Density Residential (LDR)
- Medium Density Residential (MDR)
- High Density Residential/Mixed Use (HDR/MU)
- Mobile/Manufactured Home Residential (MHR)
- Commercial (C)

## Map Symbols

- White Salmon City Limits - 2015
- White Salmon Urban Exempt Area
- Parcel Lines
- Water Bodies
- Roads
  - Bridge
  - City; County; Other Govt
  - Private
  - State
  - railroad

Note: City Limits are 2015 City Limits

0 500 1,000 2,000 Feet



## Comprehensive Land Use Map City of White Salmon

DATE: 18 May 2021



July 28, 2021







# Housing Goals

- ▶ *Goal H-1.* Establish, support and maintain a diverse stock of housing that serves the full range of ages, incomes and household types, including long-term renters and people with special needs.
- ▶ *Goal H-2.* Maintain, support, and establish neighborhoods that enhance the quality of life for city residents.
- ▶ *Goal H-3.* Engage with local and regional organizations that focus on housing education and data collection to ensure supportive policies that promote housing affordability.



# Economic Development Goals

- ▶ *Goal EC-1.* Create a distinctive downtown along Jewett Boulevard that is an attractive place to walk, dine, shop, and gather.
- ▶ *Goal EC-2.* Support and expand on a robust tourism industry by capitalizing on the scenic beauty and close proximity to recreational opportunities that White Salmon offers.
- ▶ *Goal EC-3.* Create an environment that is supportive of existing businesses and does not create unnecessary barriers for their growth.
- ▶ *Goal EC-4.* Attract, plan for, and support new businesses and industries in White Salmon.
- ▶ *Goal EC-5.* Work with regional economic development partners to foster workforce development programs that support local businesses and provide residents with the training they need to work in family-wage industries.



# Transportation Goals

- ▶ *Goal T-1.* To provide a safe, efficient, and economic transportation network.
- ▶ *Goal T-2.* To provide safe pedestrian walkways and bicycle routes while maintaining arterial commercial and residential access via public streets.



# Parks and Recreation Goals

- ▶ *Goal P&R-1.* Maintain and improve access and multimodal circulation between park and recreation facilities.
- ▶ *Goal P&R-2.* Maintain existing park and recreation facilities and improve existing park and recreation facilities with new or improved facilities, amenities, and uses.
- ▶ *Goal P&R-3.* Ensure adequate funding opportunities, coordination, and partnerships to meet current and future park and recreation facility demands and maintenance needs.



# Public Facilities and Services Goal

- ▶ *Goal PF-1.* To maintain a balance between growth and services.



# History and Historic Places Goals

- ▶ *Goal H&HP-1.* Identify and document historic and cultural resources within the White Salmon urban area.
- ▶ *Goal H&HP-2.* Encourage and promote private, public, and tribal parties to support the city's archaeological, historical, and cultural goals and objectives.
- ▶ *Goal H&HP-3.* Recognize the importance of educational materials and programming to stimulate awareness of the role that preservation and promotion of historic resources play in the city's future.
- ▶ *Goal H&PP-4.* Consider historic and cultural resource sites and values into city plans where appropriate.
- ▶ *Goal H&P-5.* Maintain and preserve public locations of historical and cultural significance that are listed on local and state historic registers.
- ▶ *Goal H&P-6.* Encourage private property owners with locations of historical and cultural significance to maintain and preserve historic and cultural resources.



# Environment and Critical Areas Goals

- ▶ *Goal E/CA-1.* Protect, maintain, and improve the environmental quality of White Salmon.
- ▶ *Goal E/CA-2.* Identify, protect, restore, and enhance White Salmon's critical areas to preserve their social and ecological functions, ensure public safety, and prevent loss of private property.
- ▶ *Goal E/CA-3.* Reduce hazard fuels throughout the city and its Urban Exempt Area to a level that supports the fire departments' ability to prevent injury or death to people and to reduce property damage.
- ▶ *Goal E/CA-4.* Address climate change by working towards reducing greenhouse gas emissions, increasing energy efficiency, and improving infrastructure resiliency in White Salmon.



# Capital Improvement Program Goal

- ▶ *Goal CIP-1.* Coordinate capital improvement planning with land use planning, considering timeframe, funding and improvement demand.



# Questions?



## For more information contact:

- ▶ Jan Brending, Clerk/Treasurer
- ▶ 509-493-1133 x205
- ▶ [janb@ci.white-salmon.wa.us](mailto:janb@ci.white-salmon.wa.us)